

For Research Use Only

# Nephrin Recombinant antibody

Catalog Number: 85845-1-RR



## Basic Information

<b>Catalog Number:</b> 85845-1-RR	<b>GenBank Accession Number:</b> BC156935	<b>Purification Method:</b> Protein A purification
<b>Size:</b> 100ul , Concentration: 1000 µg/ml by Nanodrop;	<b>GeneID (NCBI):</b> 4868	<b>CloneNo.:</b> 250064G12
<b>Source:</b> Rabbit	<b>UNIPROT ID:</b> O60500	<b>Recommended Dilutions:</b> WB: 1:1000-1:4000
<b>Isotype:</b> IgG	<b>Full Name:</b> nephrin 1, congenital, Finnish type (nephrin)	
<b>Immunogen Catalog Number:</b> AG18994	<b>Calculated MW:</b> 1241 aa, 135 kDa	
	<b>Observed MW:</b> 120-130 kDa	

## Applications

<b>Tested Applications:</b> WB, ELISA	<b>Positive Controls:</b> WB : mouse kidney tissue,
<b>Species Specificity:</b> human, mouse	

## Background Information

Podocytes are a major component of the glomerular blood filtration barrier. Podocyte protein Nephrin, also known as NPHS1, is the first to be identified as a central component of the slit diaphragm (SD), which is the podocyte cell-cell junction. Mutations in Nephrin lead to congenital nephrosis, such as steroid-resistant proteinuria and congenital nephrotic syndrome of the Finnish type (CNF).

## Storage

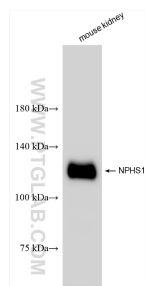
**Storage:**  
Store at -20°C. Stable for one year after shipment.  
**Storage Buffer:**  
PBS with 0.02% sodium azide and 50% glycerol, pH7.3  
Aliquoting is unnecessary for -20°C storage

\*\*\* 20ul sizes contain 0.1% BSA

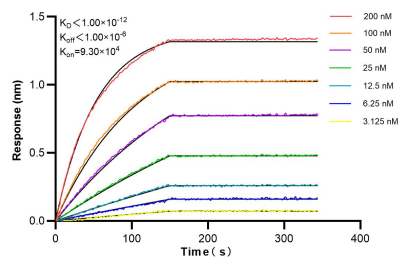
For technical support and original validation data for this product please contact:  
T: 1 (888) 4PTGLAB (1-888-478-4522) (toll free in USA), or 1(312) 455-8498 (outside USA)  
E: [proteintech@ptglab.com](mailto:proteintech@ptglab.com)  
W: [ptglab.com](http://ptglab.com)

This product is exclusively available under Proteintech Group brand and is not available to purchase from any other manufacturer.

## Selected Validation Data



mouse kidney tissue were subjected to SDS PAGE followed by western blot with 85845-1-RR (Nephrin antibody) at dilution of 1:2000 incubated at room temperature for 1.5 hours.



Biolayer interferometry (BLI) kinetic assays of 85845-1-RR against Human Nephrin were performed. The affinity constant is below 1 pM.