

For Research Use Only

# Nephrin Recombinant antibody, PBS Only

Catalog Number: 85845-1-PBS



## Basic Information

### Catalog Number:

85845-1-PBS

### Size:

100ug, Concentration: 1 mg/ml by Nanodrop;

### Source:

Rabbit

### Isotype:

IgG

### Immunogen Catalog Number:

AG18994

### GenBank Accession Number:

BC156935

### GeneID (NCBI):

4868

### UNIPROT ID:

O60500

### Full Name:

nephrosis 1, congenital, Finnish type (nephrin)

### Calculated MW:

1241 aa, 135 kDa

### Observed MW:

120-130 kDa

### Purification Method:

Protein A purification

### CloneNo.:

250064G12

## Applications

### Tested Applications:

WB, Indirect ELISA

### Species Specificity:

human, mouse

## Background Information

Podocytes are a major component of the glomerular blood filtration barrier. Podocyte protein Nephrin, also known as NPHS1, is the first to be identified as a central component of the slit diaphragm (SD), which is the podocyte cell-cell junction. Mutations in Nephrin lead to congenital nephrosis, such as steroid-resistant proteinuria and congenital nephrotic syndrome of the Finnish type (CNF).

## Storage

### Storage:

Store at -80°C.

### Storage Buffer:

PBS only, pH7.3

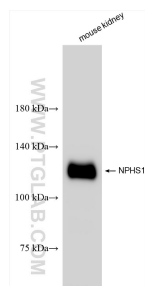
For technical support and original validation data for this product please contact:

T: 1 (888) 4PTGLAB (1-888-478-4522) (toll free in USA), or 1(312) 455-8498 (outside USA)

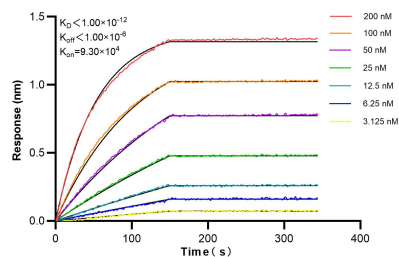
E: [proteintech@ptglab.com](mailto:proteintech@ptglab.com)  
W: [ptglab.com](http://ptglab.com)

This product is exclusively available under Proteintech Group brand and is not available to purchase from any other manufacturer.

## Selected Validation Data



mouse kidney tissue were subjected to SDS PAGE followed by western blot with 85845-1-RR (Nephrin antibody) at dilution of 1:2000 incubated at room temperature for 1.5 hours. This data was developed using the same antibody clone with 85845-1-PBS in a different storage buffer formulation.



Biolayer interferometry (BLI) kinetic assays of 85845-1-RR against Human Nephrin were performed. The affinity constant is below 1 pM.