

For Research Use Only

# PVRL3 Recombinant antibody, PBS Only (Capture/Detector)

Catalog Number: 85833-3-PBS



## Basic Information

<b>Catalog Number:</b> 85833-3-PBS	<b>GenBank Accession Number:</b> NM_015480.3	<b>Purification Method:</b> Protein A purification
<b>Size:</b> 100ug , Concentration: 1 mg/ml by Nanodrop;	<b>GeneID (NCBI):</b> 25945	<b>CloneNo.:</b> 242804F2
<b>Source:</b> Rabbit	<b>UNIPROT ID:</b> Q9NQS3-1	
<b>Isotype:</b> IgG	<b>Full Name:</b> poliovirus receptor-related 3	
<b>Immunogen Catalog Number:</b> EG2657	<b>Calculated MW:</b> 61 kDa	

## Applications

**Tested Applications:**  
Cytometric bead array, Sandwich ELISA, Indirect ELISA, Sample test

**Species Specificity:**  
human

## Product Information

85833-3-PBS targets PVRL3 as part of a matched antibody pair:

MP02144-1: 85833-3-PBS capture and 85833-2-PBS detection (validated in Cytometric bead array)

MP02144-2: 85833-3-PBS capture and 85833-1-PBS detection (validated in Cytometric bead array)

MP02144-3: 85833-4-PBS capture and 85833-3-PBS detection (validated in Sandwich ELISA)

Unconjugated rabbit recombinant monoclonal antibody in PBS only (BSA and azide free) storage buffer at a concentration of 1 mg/mL, ready for conjugation. Created using Proteintech's proprietary in-house recombinant technology. Recombinant production enables unrivalled batch-to-batch consistency, easy scale-up, and future security of supply.

This conjugation ready format makes antibodies ideal for use in many applications including: ELISAs, multiplex assays requiring matched pairs, mass cytometry, and multiplex imaging applications. Antibody use should be optimized by the end user for each application and assay.

## Storage

**Storage:**  
Store at -80°C.

**Storage Buffer:**  
PBS only, pH7.3

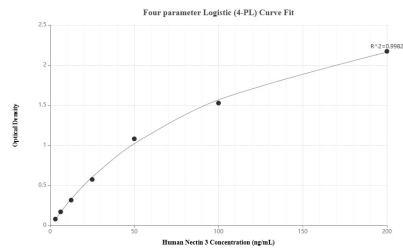
For technical support and original validation data for this product please contact:

T: 1 (888) 4PTGLAB (1-888-478-4522) (toll free in USA), or 1(312) 455-8498 (outside USA)

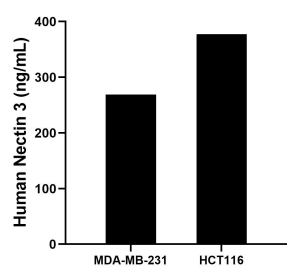
E: [proteintech@ptglab.com](mailto:proteintech@ptglab.com)  
W: [ptglab.com](http://ptglab.com)

This product is exclusively available under Proteintech Group brand and is not available to purchase from any other manufacturer.

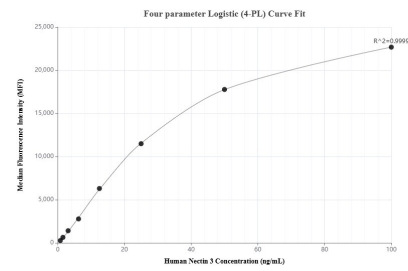
# Selected Validation Data



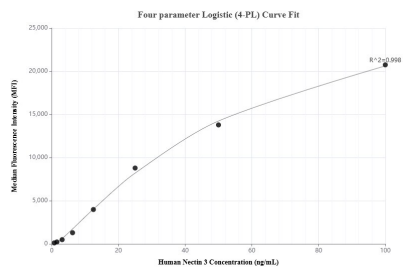
Sandwich ELISA standard curve of MP02144-3, Human Nectin 3 Recombinant Matched Antibody Pair - PBS only. 85833-4-PBS was coated to a plate as the capture antibody and incubated with serial dilutions of standard Eg2657. 85833-3-PBS was HRP conjugated as the detection antibody. Range: 3.13-200 ng/mL



The mean Nectin 3 concentration was determined to be 269.06 ng/mL in MDA-MB-231 cell extract based on a 1.6 mg/mL extract load and 377.13 ng/mL in HCT116 cell extract based on a 1.3 mg/mL extract load.



Cytometric bead array standard curve of MP02144-1, Nectin 3 Recombinant Matched Antibody Pair, PBS Only. Capture antibody: 85833-3-PBS. Detection antibody: 85833-2-PBS. Standard: Eg2657. Range: 0.781-100 ng/mL



Cytometric bead array standard curve of MP02144-2, Nectin 3 Recombinant Matched Antibody Pair, PBS Only. Capture antibody: 85833-3-PBS. Detection antibody: 85833-1-PBS. Standard: Eg2657. Range: 0.781-100 ng/mL