

For Research Use Only

# CLIC1 Recombinant antibody

Catalog Number: 85831-4-RR



## Basic Information

Catalog Number:	85831-4-RR	GenBank Accession Number:	BC064527	Purification Method:	Protein A purification
Size:	100ul , Concentration: 1000 µg/ml by Nanodrop;	GeneID (NCBI):	1192	CloneNo.:	250143E11
Source:	Rabbit	UNIPROT ID:	O00299	Recommended Dilutions:	WB: 1:5000-1:50000 IHC: 1:500-1:2000 IF/ICC: 1:200-1:800
Isotype:	IgG	Full Name:	chloride intracellular channel 1		
Immunogen Catalog Number:	AG6049	Calculated MW:	27 kDa		
		Observed MW:	27-32 kDa		

## Applications

Tested Applications:  
WB, IHC, IF/ICC, ELISA

Species Specificity:  
human, mouse, rat

**Note-IHC: suggested antigen retrieval with TE buffer pH 9.0; (\*) Alternatively, antigen retrieval may be performed with citrate buffer pH 6.0**

Positive Controls:

WB : HeLa cells, rat spleen tissue, HL-60 cells, C2C12 cells, RAW 264.7 cells, C6 cells, mouse spleen tissue

IHC : mouse kidney tissue, rat spleen tissue

IF/ICC : HeLa cells,

## Background Information

Chloride intracellular channel protein 1 (CLIC1) is a member of the chloride intracellular channel protein family. It plays a crucial role in various cellular processes, including the regulation of chloride ion transport, cell viability, and mitochondrial function. CLIC1 is involved in the formation of membrane-inserted channels that facilitate chloride ion movement, which is essential for maintaining cellular homeostasis and function (PMID: 32116799). Additionally, CLIC1 has been implicated in cancer progression, where it influences cell proliferation, migration, and invasion (PMID: 38027011).

## Storage

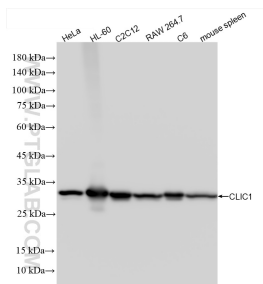
Storage:  
Store at -20°C. Stable for one year after shipment.  
Storage Buffer:  
PBS with 0.02% sodium azide and 50% glycerol, pH7.3  
Aliquoting is unnecessary for -20°C storage

\*\*\* 20ul sizes contain 0.1% BSA

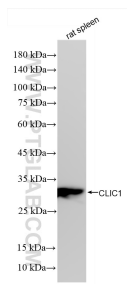
For technical support and original validation data for this product please contact:  
T: 1 (888) 4PTGLAB (1-888-478-4522) (toll free in USA), or 1(312) 455-8498 (outside USA)  
E: [proteintech@ptglab.com](mailto:proteintech@ptglab.com)  
W: [ptglab.com](http://ptglab.com)

This product is exclusively available under Proteintech Group brand and is not available to purchase from any other manufacturer.

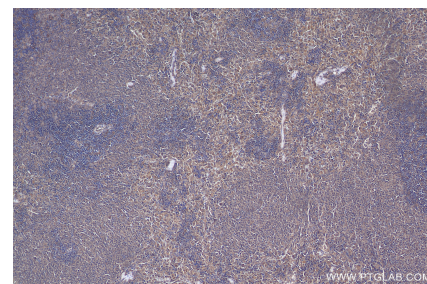
## Selected Validation Data



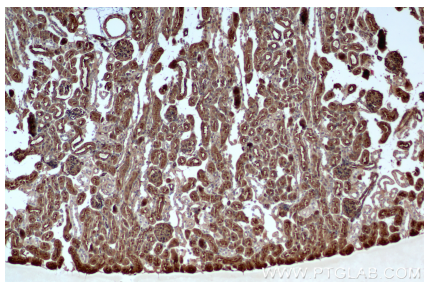
Various lysates were subjected to SDS PAGE followed by western blot with 85831-4-RR (CLIC1 antibody) at dilution of 1:10000 incubated at room temperature for 1.5 hours.



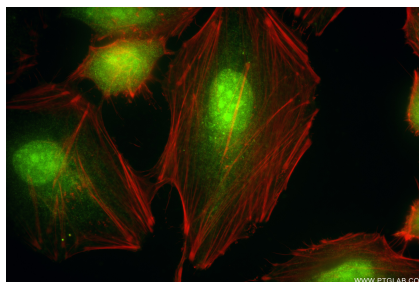
Various lysates were subjected to SDS PAGE followed by western blot with 85831-4-RR (CLIC1 antibody) at dilution of 1:10000 incubated at room temperature for 1.5 hours.



Immunohistochemical analysis of paraffin-embedded rat spleen tissue slide using 85831-4-RR (CLIC1 antibody) at dilution of 1:800 (under 10x lens). Heat mediated antigen retrieval with Tris-EDTA buffer (pH 9.0).



Immunohistochemical analysis of paraffin-embedded mouse kidney tissue slide using 85831-4-RR (CLIC1 antibody) at dilution of 1:1000 (under 10x lens). Heat mediated antigen retrieval with Tris-EDTA buffer (pH 9.0).



Immunofluorescent analysis of (4% PFA) fixed HeLa cells using CLIC1 antibody (85831-4-RR, Clone: 250143E11) at dilution of 1:400 and Coralite® 488-Conjugated Goat Anti-Rabbit IgG(H+L) (SA00013-2), CL594-Phalloidin (red).