

For Research Use Only

PVALB Recombinant antibody, PBS Only (Detector)

Catalog Number: 85819-2-PBS



Basic Information

Catalog Number: 85819-2-PBS	GenBank Accession Number: NM_002854	Purification Method: Protein A purification
Size: 100ug , Concentration: 1 mg/ml by Nanodrop;	GeneID (NCBI): 5816	CloneNo.: 250158B10
Source: Rabbit	UNIPROT ID: P20472	
Isotype: IgG	Full Name: parvalbumin	
Immunogen Catalog Number: AG30189	Calculated MW: 12 kDa	

Applications

Tested Applications:
Cytometric bead array, Sandwich ELISA, Indirect ELISA, Sample test

Species Specificity:
human

Product Information

85819-2-PBS targets PVALB as part of a matched antibody pair:

MP02167-1: 85819-3-PBS capture and 85819-2-PBS detection (validated in Cytometric bead array, Sandwich ELISA)

MP02167-2: 85819-1-PBS capture and 85819-2-PBS detection (validated in Cytometric bead array)

Unconjugated rabbit recombinant monoclonal antibody in PBS only (BSA and azide free) storage buffer at a concentration of 1 mg/mL, ready for conjugation. Created using Proteintech's proprietary in-house recombinant technology. Recombinant production enables unrivalled batch-to-batch consistency, easy scale-up, and future security of supply.

This conjugation ready format makes antibodies ideal for use in many applications including: ELISAs, multiplex assays requiring matched pairs, mass cytometry, and multiplex imaging applications. Antibody use should be optimized by the end user for each application and assay.

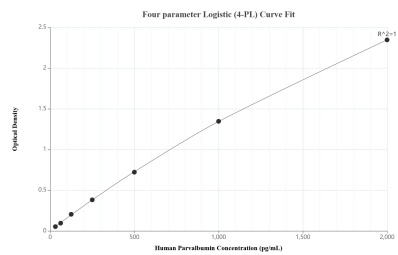
Storage

Storage:
Store at -80°C.
Storage Buffer:
PBS only, pH7.3

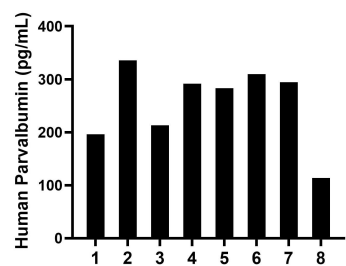
For technical support and original validation data for this product please contact:
T: 1 (888) 4PTGLAB (1-888-478-4522) (toll free in USA), or 1(312) 455-8498 (outside USA)
E: proteintech@ptglab.com
W: ptglab.com

This product is exclusively available under Proteintech Group brand and is not available to purchase from any other manufacturer.

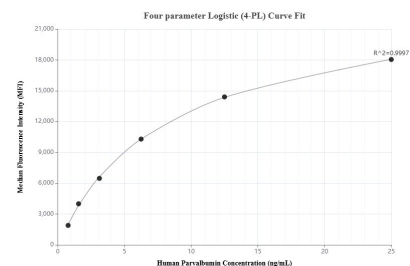
Selected Validation Data



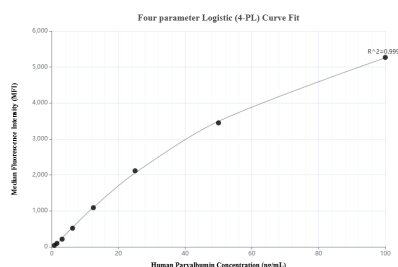
Sandwich ELISA standard curve of MP02167-1, Human Parvalbumin Recombinant Matched Antibody Pair - PBS only. 85819-3-PBS was coated to a plate as the capture antibody and incubated with serial dilutions of standard Ag30189. 85819-2-PBS was HRP conjugated as the detection antibody. Range: 31.25-2000 pg/mL



Serum of eight individual healthy human donors was measured. The Parvalbumin concentration of detected samples was determined to be 254.8 pg/mL with a range of 113.7-335.8 pg/mL



Cytometric bead array standard curve of MP02167-1, Parvalbumin Recombinant Matched Antibody Pair, PBS Only. Capture antibody: 85819-3-PBS. Detection antibody: 85819-2-PBS. Standard: Ag30189. Range: 0.781-25 ng/mL



Cytometric bead array standard curve of MP02167-2, Parvalbumin Recombinant Matched Antibody Pair, PBS Only. Capture antibody: 85819-1-PBS. Detection antibody: 85819-2-PBS. Standard: Ag30189. Range: 0.781-100 ng/mL