

For Research Use Only

INVS Recombinant antibody, PBS Only (Detector)

Catalog Number: 85768-2-PBS



Basic Information

Catalog Number: 85768-2-PBS	GenBank Accession Number: BC006370	Purification Method: Protein A purification
Size: 100ug , Concentration: 1 mg/ml by Nanodrop;	GeneID (NCBI): 27130	CloneNo.: 250038E2
Source: Rabbit	UNIPROT ID: Q9Y283	
Isotype: IgG	Full Name: inversin	
Immunogen Catalog Number: AG0934	Calculated MW: 118 kDa, 100 kDa	
	Observed MW: 100 kDa	

Applications

Tested Applications:
WB, Cytometric bead array, Indirect ELISA

Species Specificity:
human

Product Information

85768-2-PBS targets INVS as part of a matched antibody pair:

MP02076-1: 85768-3-PBS capture and 85768-2-PBS detection (validated in Cytometric bead array)

MP02076-2: 85768-1-PBS capture and 85768-2-PBS detection (validated in Cytometric bead array)

Unconjugated rabbit recombinant monoclonal antibody in PBS only (BSA and azide free) storage buffer at a concentration of 1 mg/mL, ready for conjugation. Created using Proteintech's proprietary in-house recombinant technology. Recombinant production enables unrivalled batch-to-batch consistency, easy scale-up, and future security of supply.

This conjugation ready format makes antibodies ideal for use in many applications including: ELISAs, multiplex assays requiring matched pairs, mass cytometry, and multiplex imaging applications. Antibody use should be optimized by the end user for each application and assay.

Background Information

INVS, short for inversin, plays a role in primary cilia function and involvement in the cell cycle. It is required for normal renal development and establishment of the left-right axis. INVS may be involved in Wnt signaling pathways by acting as a molecular switch between different them. Inhibits the canonical Wnt pathway by targeting cytoplasmic dishevelled (DVL1) for degradation by the ubiquitin-proteasome. This suggests that it is required in renal development to oppose the repression of terminal differentiation of tubular epithelial cells by Wnt signaling.

Storage

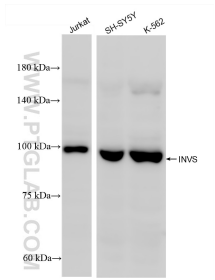
Storage:
Store at -80°C.

Storage Buffer:
PBS only, pH7.3

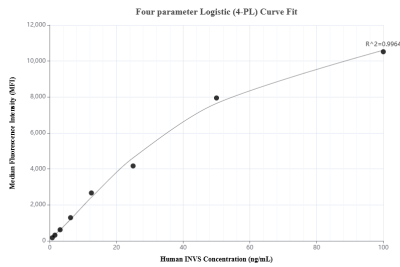
For technical support and original validation data for this product please contact:
T: 1 (888) 4PTGLAB (1-888-478-4522) (toll free in USA), or 1(312) 455-8498 (outside USA)
E: proteintech@ptglab.com
W: ptglab.com

This product is exclusively available under Proteintech Group brand and is not available to purchase from any other manufacturer.

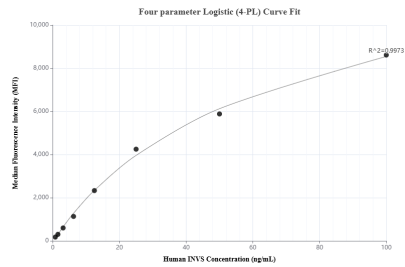
Selected Validation Data



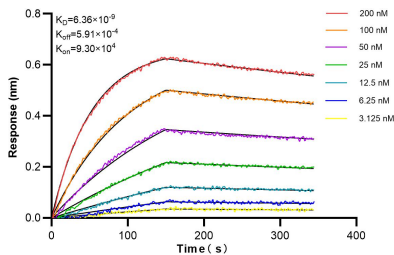
Various lysates were subjected to SDS PAGE followed by western blot with 85768-2-RR (INVS antibody) at dilution of 1:2000 incubated at room temperature for 1.5 hours. This data was developed using the same antibody clone with 85768-2-PBS in a different storage buffer formulation.



Cytometric bead array standard curve of MP02076-1, INVS Recombinant Matched Antibody Pair, PBS Only. Capture antibody: 85768-3-PBS. Detection antibody: 85768-2-PBS. Standard: Ag0934. Range: 0.781-100 ng/mL



Cytometric bead array standard curve of MP02076-2, INVS Recombinant Matched Antibody Pair, PBS Only. Capture antibody: 85768-1-PBS. Detection antibody: 85768-2-PBS. Standard: Ag0934. Range: 0.781-100 ng/mL



Biolayer interferometry (BLI) kinetic assays of 85768-2-RR against Human INVS were performed. The affinity constant is 6.36 nM.