

For Research Use Only

ALDH3A1 Recombinant antibody

Catalog Number: 85725-1-RR



Basic Information

Catalog Number: 85725-1-RR	GenBank Accession Number: BC004370	Purification Method: Protein A purification
Size: 100ul , Concentration: 1000 µg/ml by Nanodrop;	GeneID (NCBI): 218	CloneNo.: 243134D8
Source: Rabbit	UNIPROT ID: P30838	Recommended Dilutions: WB 1:2000-1:10000
Isotype: IgG	Full Name: aldehyde dehydrogenase 3 family, memberA1	
Immunogen Catalog Number: AG7977	Calculated MW: 50 kDa	
	Observed MW: 48-52 kDa	

Applications

Tested Applications: WB, ELISA	Positive Controls:
Species Specificity: human, mouse	WB : A549 cells, BxPC-3 cells, MG-63 cells, mouse stomach tissue

Background Information

ALDH3A1 (Aldehyde dehydrogenase, dimeric NADP-preferring), also named as ALDH3, is a member of the ALDH superfamily, which consists of NAD(P)+-dependent enzymes that catalyse the oxidation of a wide variety of endogenously produced and exogenous aldehydes to their corresponding acids. It is expressed at high concentrations in the mammalian cornea and it is believed that it protects this vital tissue and the rest of the eye against UVlight-induced damage.(PMID:12943535). It can exist as a dimer(PMID:16919242).

Storage

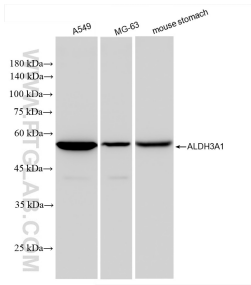
Storage:
Store at -20°C. Stable for one year after shipment.
Storage Buffer:
PBS with 0.02% sodium azide and 50% glycerol, pH7.3
Aliquoting is unnecessary for -20°C storage

*** 20ul sizes contain 0.1% BSA

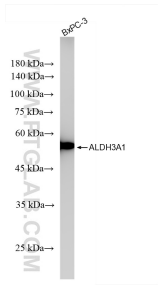
For technical support and original validation data for this product please contact:
T: 1 (888) 4PTGLAB (1-888-478-4522) (toll free in USA), or 1(312) 455-8498 (outside USA)
E: proteintech@ptglab.com
W: ptglab.com

This product is exclusively available under Proteintech Group brand and is not available to purchase from any other manufacturer.

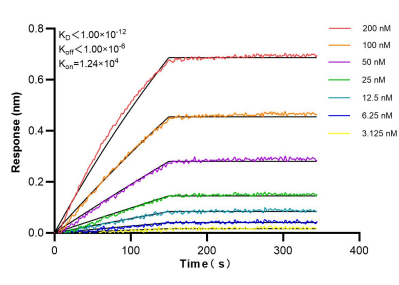
Selected Validation Data



Various lysates were subjected to SDS PAGE followed by western blot with 85725-1-RR (ALDH3A1 antibody) at dilution of 1:5000 incubated at room temperature for 1.5 hours.



BxPC-3 cells were subjected to SDS PAGE followed by western blot with 85725-1-RR (ALDH3A1 antibody) at dilution of 1:5000 incubated at room temperature for 1.5 hours.



Biolayer interferometry (BLI) kinetic assays of 85725-1-RR against Human ALDH3A1 were performed. The affinity constant is below 1 pM.