

For Research Use Only

Serpin E1/PAI-1 Recombinant antibody, PBS Only

Catalog Number: 85683-6-PBS



Basic Information

Catalog Number: 85683-6-PBS	GenBank Accession Number: BC010860	Purification Method: Protein A purification
Size: 100ug , Concentration: 1 mg/ml by Nanodrop;	GeneID (NCBI): 5054	CloneNo.: 243115E1
Source: Rabbit	UNIPROT ID: P05121	
Isotype: IgG	Full Name: serpin peptidase inhibitor, clade E (nexin, plasminogen activator inhibitor type 1), member 1	
Immunogen Catalog Number: EG3798	Calculated MW: 402 aa, 45 kDa	
	Observed MW: 45 kDa	

Applications

Tested Applications:
WB, Indirect ELISA

Species Specificity:
human

Background Information

SERPINE1, also named as Plasminogen activator inhibitor type 1 (PAI-1), is a member of the serine protease inhibitor (SERPIN) superfamily. PAI-1 is the principal inhibitor of tPA and uPA, and hence is an inhibitor of fibrinolysis. Defects in this gene are the cause of plasminogen activator inhibitor-1 deficiency (PAI-1 deficiency), and high concentrations of the gene product are associated with thrombophilia.

Storage

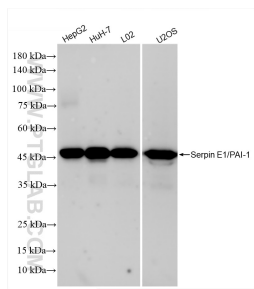
Storage:
Store at -80°C.

Storage Buffer:
PBS only, pH7.3

For technical support and original validation data for this product please contact:
T: 1 (888) 4PTGLAB (1-888-478-4522) (toll free in USA), or 1(312) 455-8498 (outside USA)
E: proteintech@ptglab.com
W: ptglab.com

This product is exclusively available under Proteintech Group brand and is not available to purchase from any other manufacturer.

Selected Validation Data



Various lysates were subjected to SDS PAGE followed by western blot with 85683-6-RR (SERPINE1 antibody) at dilution of 1:2000 incubated at room temperature for 1.5 hours. This data was developed using the same antibody clone with 85683-6-PBS in a different storage buffer formulation.