

For Research Use Only

SERPINE1 Recombinant antibody, PBS Only (Capture)

Catalog Number: 85683-4-PBS



Basic Information

| | | |
|---|--|---|
| Catalog Number: 85683-4-PBS | GenBank Accession Number: BC010860 | Purification Method: Protein A purification |
| Size: 100ug , Concentration: 1 mg/ml by Nanodrop; | GeneID (NCBI): 5054 | CloneNo.: 243115B1 |
| Source: Rabbit | UNIPROT ID: P05121 | |
| Isotype: IgG | Full Name: serpin peptidase inhibitor, clade E (nexin, plasminogen activator inhibitor type 1), member 1 | |
| | Calculated MW: 402 aa, 45 kDa | |

Applications

Tested Applications:
Sandwich ELISA, Indirect ELISA, Sample test

Species Specificity:
human

Product Information

85683-4-PBS targets SERPINE1 as part of a matched antibody pair:

MP02035-3: 85683-4-PBS capture and 85683-2-PBS detection (validated in Sandwich ELISA)

Unconjugated rabbit recombinant monoclonal antibody in PBS only (BSA and azide free) storage buffer at a concentration of 1 mg/mL, ready for conjugation. Created using Proteintech's proprietary in-house recombinant technology. Recombinant production enables unrivalled batch-to-batch consistency, easy scale-up, and future security of supply.

This conjugation ready format makes antibodies ideal for use in many applications including: ELISAs, multiplex assays requiring matched pairs, mass cytometry, and multiplex imaging applications. Antibody use should be optimized by the end user for each application and assay.

Storage

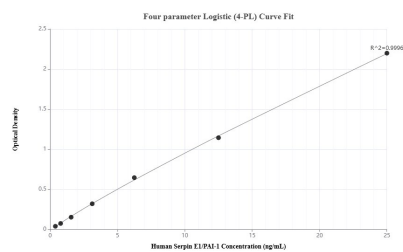
Storage:
Store at -80°C.

Storage Buffer:
PBS Only

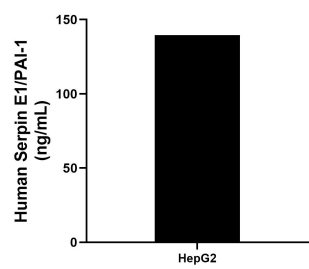
For technical support and original validation data for this product please contact:
T: 1 (888) 4PTGLAB (1-888-478-4522) (toll free in USA), or 1(312) 455-8498 (outside USA)
E: proteintech@ptglab.com
W: ptglab.com

This product is exclusively available under Proteintech Group brand and is not available to purchase from any other manufacturer.

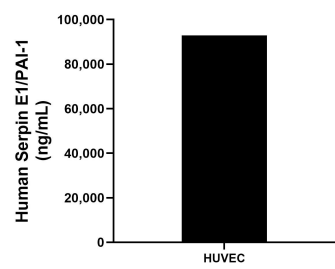
Selected Validation Data



Sandwich ELISA standard curve of MP02035-3, Human Serpin E1/PAI-1 Recombinant Matched Antibody Pair - PBS only. 85683-4-PBS was coated to a plate as the capture antibody and incubated with serial dilutions of standard Eg3798. 85683-2-PBS was HRP conjugated as the detection antibody. Range: 0.391-25 ng/mL



HepG2 were cultured in DMEM supplemented with 10% fetal bovine serum, 2.5 mM L-glutamine, 100 U/mL penicillin, and 100 µg/mL streptomycin sulfate. An aliquot of the cell culture supernate was removed, assayed for human Serpin E1/PAI-1, and measured 139.44 ng/mL.



The mean Serpin E1/PAI-1 concentration was determined to be 92,887.56 ng/mL in HUVEC cell extract based on a 1.4 mg/mL extract load.