

For Research Use Only

SERPINE1 Recombinant antibody, PBS Only (Detector)

Catalog Number: 85683-2-PBS



Basic Information

Catalog Number: 85683-2-PBS	GenBank Accession Number: BC010860	Purification Method: Protein A purification
Size: 100ug , Concentration: 1 mg/ml by Nanodrop;	GeneID (NCBI): 5054	CloneNo.: 243115D3
Source: Rabbit	UNIPROT ID: P05121	
Isotype: IgG	Full Name: serpin peptidase inhibitor, clade E (nexin, plasminogen activator inhibitor type 1), member 1	
	Calculated MW: 402 aa, 45 kDa	

Applications

Tested Applications:
Cytometric bead array, Sandwich ELISA, Indirect ELISA, Sample test

Species Specificity:
human

Product Information

85683-2-PBS targets SERPINE1 as part of a matched antibody pair:

MP02035-1: 85683-1-PBS capture and 85683-2-PBS detection (validated in Cytometric bead array)

MP02035-2: 85683-3-PBS capture and 85683-2-PBS detection (validated in Cytometric bead array)

MP02035-3: 85683-4-PBS capture and 85683-2-PBS detection (validated in Sandwich ELISA)

Unconjugated rabbit recombinant monoclonal antibody in PBS only (BSA and azide free) storage buffer at a concentration of 1 mg/mL, ready for conjugation. Created using Proteintech's proprietary in-house recombinant technology. Recombinant production enables unrivalled batch-to-batch consistency, easy scale-up, and future security of supply.

This conjugation ready format makes antibodies ideal for use in many applications including: ELISAs, multiplex assays requiring matched pairs, mass cytometry, and multiplex imaging applications. Antibody use should be optimized by the end user for each application and assay.

Storage

Storage:
Store at -80°C.

Storage Buffer:
PBS Only

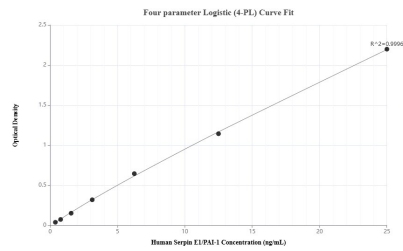
For technical support and original validation data for this product please contact:

T: 1 (888) 4PTGLAB (1-888-478-4522) (toll free in USA), or 1(312) 455-8498 (outside USA)

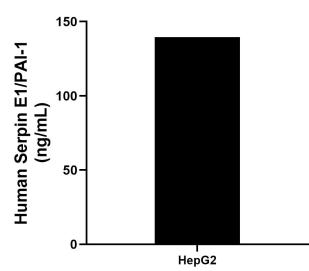
E: proteintech@ptglab.com
W: ptglab.com

This product is exclusively available under Proteintech Group brand and is not available to purchase from any other manufacturer.

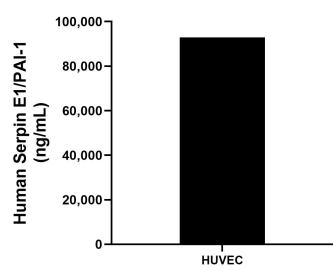
Selected Validation Data



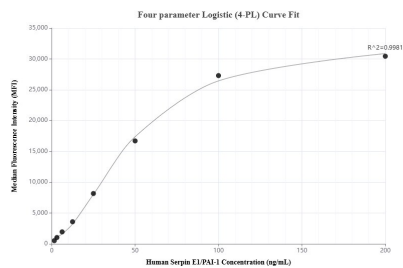
Sandwich ELISA standard curve of MP02035-3, Human Serpin E1/PAI-1 Recombinant Matched Antibody Pair - PBS only. 85683-4-PBS was coated to a plate as the capture antibody and incubated with serial dilutions of standard Eg3798. 85683-2-PBS was HRP conjugated as the detection antibody. Range: 0.391-25 ng/mL



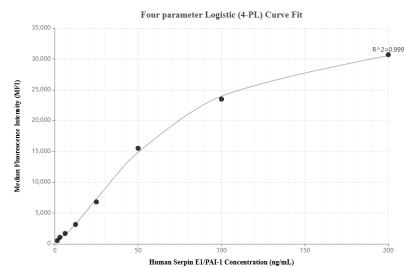
HepG2 were cultured in DMEM supplemented with 10% fetal bovine serum, 2.5 mM L-glutamine, 100 U/mL penicillin, and 100 µg/mL streptomycin sulfate. An aliquot of the cell culture supernate was removed, assayed for human Serpin E1/PAI-1, and measured 139.44 ng/mL



The mean Serpin E1/PAI-1 concentration was determined to be 92,887.56 ng/mL in HUVEC cell extract based on a 1.4 mg/mL extract load.



Cytometric bead array standard curve of MP02035-2, Serpin E1/PAI-1 Recombinant Matched Antibody Pair, PBS Only. Capture antibody: 85683-3-PBS. Detection antibody: 85683-2-PBS. Standard: Eg3798. Range: 1.563-200 ng/mL



Cytometric bead array standard curve of MP02035-1, Serpin E1/PAI-1 Recombinant Matched Antibody Pair, PBS Only. Capture antibody: 85683-1-PBS. Detection antibody: 85683-2-PBS. Standard: Eg3798. Range: 1.563-200 ng/mL