

For Research Use Only

KTN1 Recombinant antibody

Catalog Number: 85681-4-RR



Basic Information

Catalog Number: 85681-4-RR	GenBank Accession Number: BC117132	Purification Method: Protein A purification
Size: 100ul , Concentration: 1000 µg/ml by Nanodrop;	GeneID (NCBI): 3895	CloneNo.: 243067A11
Source: Rabbit	UNIPROT ID: Q86UP2	Recommended Dilutions: WB: 1:5000-1:50000 IHC: 1:250-1:1000 IF/ICC: 1:250-1:1000
Isotype: IgG	Full Name: kinectin 1 (kinesin receptor)	
Immunogen Catalog Number: AG13854	Calculated MW: 1357 aa, 156 kDa	
	Observed MW: 156 kDa	

Applications

Tested Applications:
WB, IHC, IF/ICC, ELISA

Species Specificity:
human

**Note-IHC: suggested antigen retrieval with
TE buffer pH 9.0; (*) Alternatively, antigen
retrieval may be performed with citrate
buffer pH 6.0**

Positive Controls:

WB : HeLa cells, Jurkat cells, K-562 cells, PC-3 cells,
SKOV-3 cells, A549 cells

IHC : human ovary cancer tissue,

IF/ICC : HepG2 cells,

Background Information

KTN1/Kinectin is an integral endoplasmic reticulum (ER) membrane protein which acts as dynamic anchor to facilitate ER membrane extension along microtubules. It has been found to bind kinesin, Rho GTPase, and translation elongation factor-1delta and gets involved in organelle motility and protein synthesis.

Storage

Storage:

Store at -20°C. Stable for one year after shipment.

Storage Buffer:

PBS with 0.02% sodium azide and 50% glycerol, pH7.3

Aliquoting is unnecessary for -20°C storage

*** 20ul sizes contain 0.1% BSA

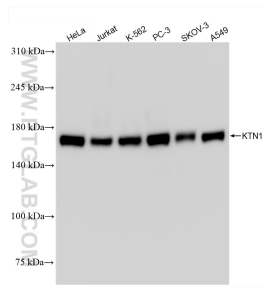
For technical support and original validation data for this product please contact:

T: 1 (888) 4PTGLAB (1-888-478-4522) (toll free
in USA), or 1(312) 455-8498 (outside USA)

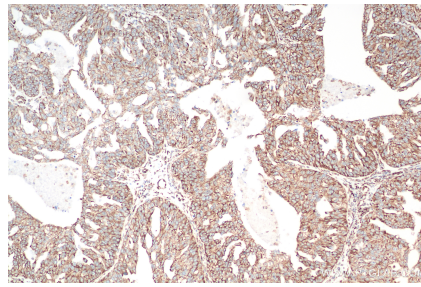
E: proteintech@ptglab.com
W: ptglab.com

This product is exclusively available under Proteintech Group brand and is not available to purchase from any other manufacturer.

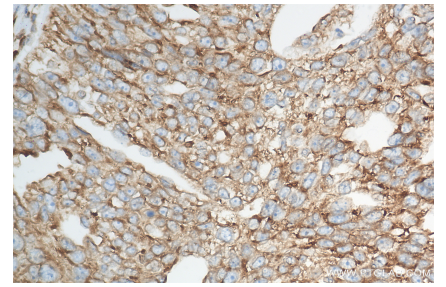
Selected Validation Data



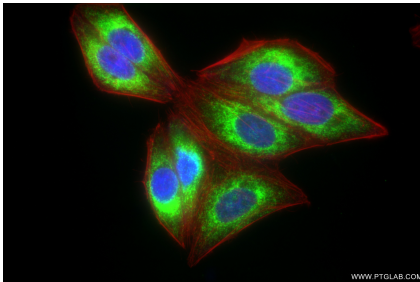
Various lysates were subjected to SDS PAGE followed by western blot with 85681-4-RR (KTN1 antibody) at dilution of 1:10000 incubated at room temperature for 1.5 hours.



Immunohistochemical analysis of paraffin-embedded human ovary cancer tissue slide using 85681-4-RR (KTN1 antibody) at dilution of 1:500 (under 10x lens). Heat mediated antigen retrieval with Tris-EDTA buffer (pH 9.0).



Immunohistochemical analysis of paraffin-embedded human ovary cancer tissue slide using 85681-4-RR (KTN1 antibody) at dilution of 1:500 (under 40x lens). Heat mediated antigen retrieval with Tris-EDTA buffer (pH 9.0).



Immunofluorescent analysis of (4% PFA) fixed HepG2 cells using KTN1 antibody (85681-4-RR, Clone: 243067A11) at dilution of 1:500 and CoraLite®488-Conjugated Goat Anti-Rabbit IgG(H+L) (SA00013-2), CL594-Phalloidin (red).