

For Research Use Only

SII-TFIIS,TCEA1 Recombinant antibody, PBS Only (Detector)

Catalog Number:85664-2-PBS



Basic Information

Catalog Number: 85664-2-PBS	GenBank Accession Number: BC072460	Purification Method: Protein A purification
Size: 100ug , Concentration: 1 mg/ml by Nanodrop;	GeneID (NCBI): 6917	CloneNo.: 243155F7
Source: Rabbit	UNIPROT ID: P23193	
Isotype: IgG	Full Name: transcription elongation factor A (SII), 1	
Immunogen Catalog Number: AG12199	Calculated MW: 301 aa, 34 kDa	

Applications

Tested Applications:
Cytometric bead array, Sandwich ELISA, Indirect ELISA, Sample test

Species Specificity:
human

Product Information

85664-2-PBS targets SII-TFIIS,TCEA1 as part of a matched antibody pair:

MP02021-2: 85664-3-PBS capture and 85664-2-PBS detection (validated in Cytometric bead array)

MP02021-3: 85664-6-PBS capture and 85664-2-PBS detection (validated in Sandwich ELISA)

Unconjugated rabbit recombinant monoclonal antibody in PBS only (BSA and azide free) storage buffer at a concentration of 1 mg/mL, ready for conjugation. Created using Proteintech's proprietary in-house recombinant technology. Recombinant production enables unrivalled batch-to-batch consistency, easy scale-up, and future security of supply.

This conjugation ready format makes antibodies ideal for use in many applications including: ELISAs, multiplex assays requiring matched pairs, mass cytometry, and multiplex imaging applications. Antibody use should be optimized by the end user for each application and assay.

Storage

Storage:
Store at -80°C.

Storage Buffer:
PBS Only

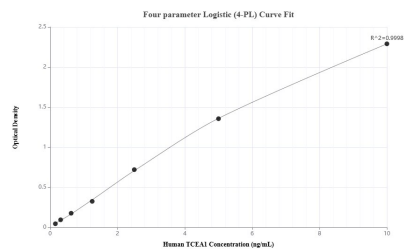
For technical support and original validation data for this product please contact:

T: 1 (888) 4PTGLAB (1-888-478-4522) (toll free in USA), or 1(312) 455-8498 (outside USA)

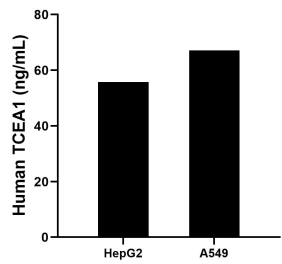
E: proteintech@ptglab.com
W: ptglab.com

This product is exclusively available under Proteintech Group brand and is not available to purchase from any other manufacturer.

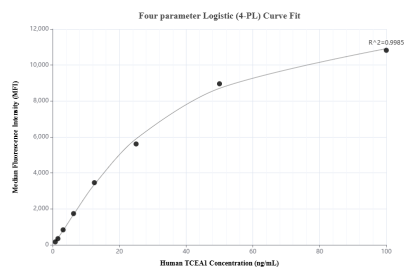
Selected Validation Data



Sandwich ELISA standard curve of MP02021-3, Human TCEA1 Recombinant Matched Antibody Pair - PBS only. 85664-6-PBS was coated to a plate as the capture antibody and incubated with serial dilutions of standard Ag12199. 85664-2-PBS was HRP conjugated as the detection antibody. Range: 0.156-10 ng/mL



The mean TCEA1 concentration was determined to be 55.72 ng/mL in HepG2 cell extract based on a 1.8 mg/mL extract load and 67.16 ng/mL in A549 cell extract based on a 3.1 mg/mL extract load.



Cytometric bead array standard curve of MP02021-2, TCEA1 Recombinant Matched Antibody Pair, PBS Only. Capture antibody: 85664-3-PBS. Detection antibody: 85664-2-PBS. Standard: Ag12199. Range: 0.781-100 ng/mL