

For Research Use Only

EHD2 Recombinant antibody, PBS Only (Detector)

Catalog Number: 85604-1-PBS



Basic Information

Catalog Number: 85604-1-PBS	GenBank Accession Number: BC014445	Purification Method: Protein A purification
Size: 100ug, Concentration: 1 mg/ml by Nanodrop;	GeneID (NCBI): 30846	CloneNo.: 243038H3
Source: Rabbit	UNIPROT ID: Q9NZN4	
Isotype: IgG	Full Name: EH-domain containing 2	
Immunogen Catalog Number: AG2002	Calculated MW: 543 aa, 61 kDa	

Applications

Tested Applications:
Cytometric bead array, Sandwich ELISA, Indirect ELISA, Sample test

Species Specificity:
human

Product Information

85604-1-PBS targets EHD2 as part of a matched antibody pair:

MP01971-2: 85604-3-PBS capture and 85604-1-PBS detection (validated in Cytometric bead array)

MP01971-3: 85604-5-PBS capture and 85604-1-PBS detection (validated in Sandwich ELISA)

Unconjugated rabbit recombinant monoclonal antibody in PBS only (BSA and azide free) storage buffer at a concentration of 1 mg/mL, ready for conjugation. Created using Proteintech's proprietary in-house recombinant technology. Recombinant production enables unrivalled batch-to-batch consistency, easy scale-up, and future security of supply.

This conjugation ready format makes antibodies ideal for use in many applications including: ELISAs, multiplex assays requiring matched pairs, mass cytometry, and multiplex imaging applications. Antibody use should be optimized by the end user for each application and assay.

Storage

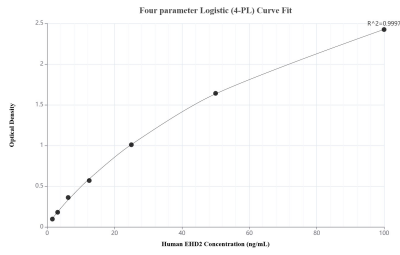
Storage:
Store at -80°C.

Storage Buffer:
PBS Only

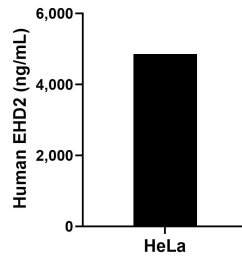
For technical support and original validation data for this product please contact:
T: 1 (888) 4PTGLAB (1-888-478-4522) (toll free in USA), or 1(312) 455-8498 (outside USA) E: proteintech@ptglab.com W: ptglab.com

This product is exclusively available under Proteintech Group brand and is not available to purchase from any other manufacturer.

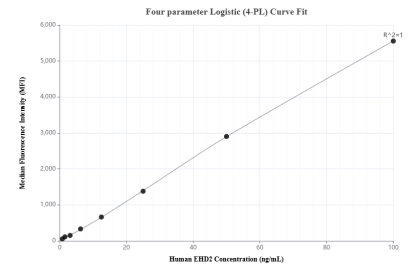
Selected Validation Data



Sandwich ELISA standard curve of MP01971-3, Human EHD2 Recombinant Matched Antibody Pair - PBS only. 85604-5-PBS was coated to a plate as the capture antibody and incubated with serial dilutions of standard Ag2002. 85604-1-PBS was HRP conjugated as the detection antibody. Range: 1.56-100 ng/mL



The mean EHD2 concentration was determined to be 4,860.77 ng/mL in HeLa cell extract based on a 1.80 mg/mL extract load.



Cytometric bead array standard curve of MP01971-2, EHD2 Recombinant Matched Antibody Pair, PBS Only. Capture antibody: 85604-3-PBS. Detection antibody: 85604-1-PBS. Standard: Ag2002. Range: 0.781-100 ng/mL