

For Research Use Only

BMPR2 Recombinant antibody, PBS Only (Capture)

Catalog Number: 85433-2-PBS



Basic Information

Catalog Number: 85433-2-PBS	GenBank Accession Number: BC052985	Purification Method: Protein A purification
Size: 100ug , Concentration: 1 mg/ml by Nanodrop;	GeneID (NCBI): 659	CloneNo.: 242826B12
Source: Rabbit	UNIPROT ID: Q13873	
Isotype: IgG	Full Name: bone morphogenetic protein receptor, type II (serine/threonine kinase)	
Immunogen Catalog Number: AG5868	Calculated MW: 115 kDa	

Applications

Tested Applications:
Sandwich ELISA, Indirect ELISA, Sample test

Species Specificity:
human

Product Information

85433-2-PBS targets BMPR2 as part of a matched antibody pair:

MP01947-1: 85433-2-PBS capture and 85433-1-PBS detection (validated in Cytometric bead array)

MP01947-3: 85433-2-PBS capture and 85433-3-PBS detection (validated in Sandwich ELISA)

Unconjugated rabbit recombinant monoclonal antibody in PBS only (BSA and azide free) storage buffer at a concentration of 1 mg/mL, ready for conjugation. Created using Proteintech's proprietary in-house recombinant technology. Recombinant production enables unrivalled batch-to-batch consistency, easy scale-up, and future security of supply.

This conjugation ready format makes antibodies ideal for use in many applications including: ELISAs, multiplex assays requiring matched pairs, mass cytometry, and multiplex imaging applications. Antibody use should be optimized by the end user for each application and assay.

Storage

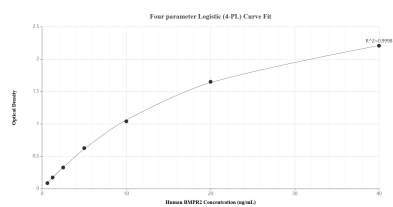
Storage:
Store at -80°C.

Storage Buffer:
PBS only, pH7.3

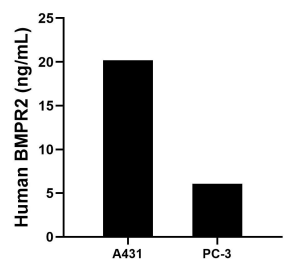
For technical support and original validation data for this product please contact:
T: 1 (888) 4PTGLAB (1-888-478-4522) (toll free in USA), or 1(312) 455-8498 (outside USA)
E: proteintech@ptglab.com
W: ptglab.com

This product is exclusively available under Proteintech Group brand and is not available to purchase from any other manufacturer.

Selected Validation Data



Sandwich ELISA standard curve of MP01947-3, Human BMPR2 Recombinant Matched Antibody Pair - PBS only. 85433-2-PBS was coated to a plate as the capture antibody and incubated with serial dilutions of standard Ag5868. 85433-3-PBS was HRP conjugated as the detection antibody. Range: 0.625-40 ng/mL



The mean BMPR2 concentration was determined to be 20.20 ng/mL in A431 cell extract based on a 2.70 mg/mL extract load and 6.06 ng/mL in PC-3 cell extract based on a 1.30 mg/mL extract load.