

For Research Use Only

# ALDH1B1 Recombinant antibody

Catalog Number: 85426-4-RR



## Basic Information

**Catalog Number:**

85426-4-RR

**Size:**

100ul , Concentration: 1000 µg/ml by Nanodrop;

**Source:**

Rabbit

**Isotype:**

IgG

**Immunogen Catalog Number:**

AG7144

**GenBank Accession Number:**

BC001619

**GeneID (NCBI):**

219

**UNIPROT ID:**

P30837

**Full Name:**

aldehyde dehydrogenase 1 family, member B1

**Calculated MW:**

57 kDa

**Observed MW:**

55 kDa

**Purification Method:**

Protein A purification

**CloneNo.:**

242944D1

**Recommended Dilutions:**

WB 1:5000-1:50000

## Applications

**Tested Applications:**

WB, ELISA

**Species Specificity:**

human, mouse, rat

**Positive Controls:**

WB : K-562 cells, HepG2 cells, HL-60 cells, mouse brain tissue, rat brain tissue, human testis tissue

## Background Information

Aldehyde dehydrogenases (ALDHs) belong to a superfamily of NAD(P)<sup>+</sup>-dependent enzymes, which catalyze the oxidation of endogenous and exogenous aldehydes to their corresponding acids. ALDH1B1 is a mitochondrial ALDH that it is dramatically upregulated in human colonic adenocarcinoma, making it a potential biomarker for human colon cancer.(PMID:21216231). ALDH1B1 is a homotetramer expressed in various adult and fetal human tissues including liver, testis, kidney, skeletal muscle, heart, placenta, brain and lung(PMID:18611112). This antibody is specific to ALDH1B1.

## Storage

**Storage:**

Store at -20°C. Stable for one year after shipment.

**Storage Buffer:**

PBS with 0.02% sodium azide and 50% glycerol pH 7.3.

Aliquoting is unnecessary for -20°C storage

\*\*\* 20ul sizes contain 0.1% BSA

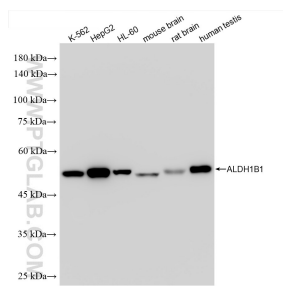
For technical support and original validation data for this product please contact:

T: 1 (888) 4PTGLAB (1-888-478-4522) (toll free in USA), or 1(312) 455-8498 (outside USA)

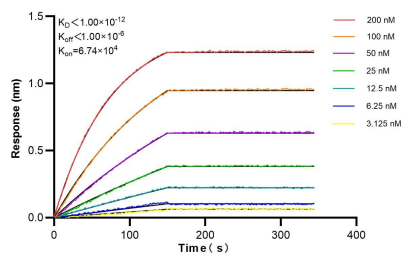
E: [proteintech@ptglab.com](mailto:proteintech@ptglab.com)  
W: [ptglab.com](http://ptglab.com)

This product is exclusively available under Proteintech Group brand and is not available to purchase from any other manufacturer.

## Selected Validation Data



Various lysates were subjected to SDS PAGE followed by western blot with 85426-4-RR (ALDH1B1 antibody) at dilution of 1:10000 incubated at room temperature for 1.5 hours.



Biolayer interferometry (BLI) kinetic assays of 85426-4-RR against Human ALDH1B1 were performed. The affinity constant is below 1 pM.