

For Research Use Only

# ALDH1B1 Recombinant antibody, PBS Only

Catalog Number: 85426-4-PBS



## Basic Information

<b>Catalog Number:</b> 85426-4-PBS	<b>GenBank Accession Number:</b> BC001619	<b>Purification Method:</b> Protein A purification
<b>Size:</b> 100ug , Concentration: 1 mg/ml by Nanodrop;	<b>GeneID (NCBI):</b> 219	<b>CloneNo.:</b> 242944D1
<b>Source:</b> Rabbit	<b>UNIPROT ID:</b> P30837	
<b>Isotype:</b> IgG	<b>Full Name:</b> aldehyde dehydrogenase 1 family, member B1	
<b>Immunogen Catalog Number:</b> AG7144	<b>Calculated MW:</b> 57 kDa	
	<b>Observed MW:</b> 55 kDa	

## Applications

**Tested Applications:**  
WB, Indirect ELISA

**Species Specificity:**  
human, mouse, rat

## Background Information

Aldehyde dehydrogenases (ALDHs) belong to a superfamily of NAD(P)<sup>+</sup>-dependent enzymes, which catalyze the oxidation of endogenous and exogenous aldehydes to their corresponding acids. ALDH1B1 is a mitochondrial ALDH that it is dramatically upregulated in human colonic adenocarcinoma, making it a potential biomarker for human colon cancer.(PMID:21216231). ALDH1B1 is a homotetramer expressed in various adult and fetal human tissues including liver, testis, kidney, skeletal muscle, heart, placenta, brain and lung(PMID:18611112). This antibody is specific to ALDH1B1.

## Storage

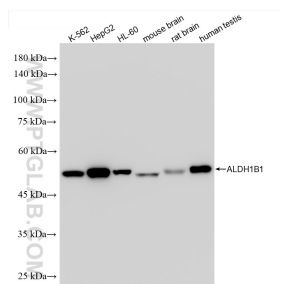
**Storage:**  
Store at -80°C.

**Storage Buffer:**  
PBS Only

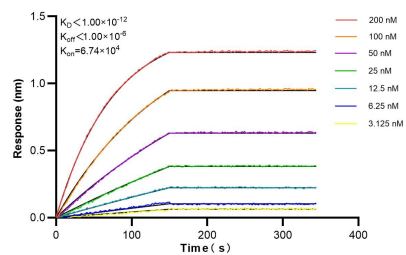
For technical support and original validation data for this product please contact:  
T: 1 (888) 4PTGLAB (1-888-478-4522) (toll free in USA), or 1(312) 455-8498 (outside USA)  
E: [proteintech@ptglab.com](mailto:proteintech@ptglab.com)  
W: [ptglab.com](http://ptglab.com)

This product is exclusively available under Proteintech Group brand and is not available to purchase from any other manufacturer.

## Selected Validation Data



Various lysates were subjected to SDS PAGE followed by western blot with 85426-4-RR (ALDH1B1 antibody) at dilution of 1:10000 incubated at room temperature for 1.5 hours. This data was developed using the same antibody clone with 85426-4-PBS in a different storage buffer formulation.



Biolayer interferometry (BLI) kinetic assays of 85426-4-RR against Human ALDH1B1 were performed. The affinity constant is below 1 pM.