

For Research Use Only

# ALDH1B1 Recombinant antibody, PBS Only (Capture)

Catalog Number: 85426-1-PBS



## Basic Information

<b>Catalog Number:</b> 85426-1-PBS	<b>GenBank Accession Number:</b> BC001619	<b>Purification Method:</b> Protein A purification
<b>Size:</b> 100ug , Concentration: 1 mg/ml by Nanodrop;	<b>GeneID (NCBI):</b> 219	<b>CloneNo.:</b> 242944C5
<b>Source:</b> Rabbit	<b>UNIPROT ID:</b> P30837	
<b>Isotype:</b> IgG	<b>Full Name:</b> aldehyde dehydrogenase 1 family, member B1	
<b>Immunogen Catalog Number:</b> AG7144	<b>Calculated MW:</b> 57 kDa	

## Applications

**Tested Applications:**  
Cytometric bead array, Sandwich ELISA, Indirect ELISA, Sample test

**Species Specificity:**  
human

## Product Information

85426-1-PBS targets ALDH1B1 as part of a matched antibody pair:

MP01995-1: 85426-1-PBS capture and 85426-2-PBS detection (validated in Cytometric bead array, Sandwich ELISA)

MP01995-2: 85426-1-PBS capture and 85426-3-PBS detection (validated in Cytometric bead array)

Unconjugated rabbit recombinant monoclonal antibody in PBS only (BSA and azide free) storage buffer at a concentration of 1 mg/mL, ready for conjugation. Created using Proteintech's proprietary in-house recombinant technology. Recombinant production enables unrivalled batch-to-batch consistency, easy scale-up, and future security of supply.

This conjugation ready format makes antibodies ideal for use in many applications including: ELISAs, multiplex assays requiring matched pairs, mass cytometry, and multiplex imaging applications. Antibody use should be optimized by the end user for each application and assay.

## Storage

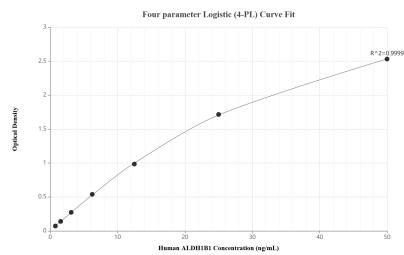
**Storage:**  
Store at -80°C.

**Storage Buffer:**  
PBS Only

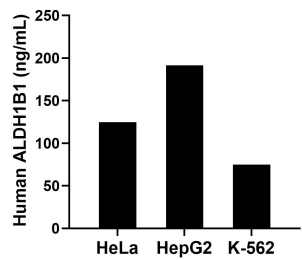
For technical support and original validation data for this product please contact:  
T: 1 (888) 4PTGLAB (1-888-478-4522) (toll free in USA), or 1(312) 455-8498 (outside USA)  
E: [proteintech@ptglab.com](mailto:proteintech@ptglab.com)  
W: [ptglab.com](http://ptglab.com)

This product is exclusively available under Proteintech Group brand and is not available to purchase from any other manufacturer.

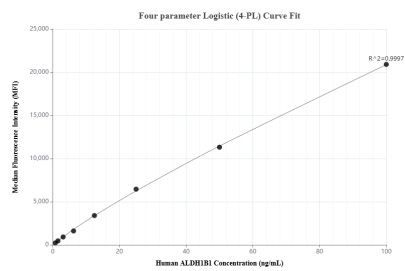
## Selected Validation Data



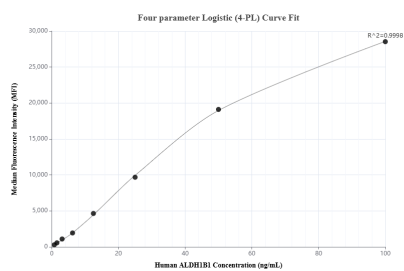
Sandwich ELISA standard curve of MP01995-1, Human ALDH1B1 Recombinant Matched Antibody Pair - PBS only. 85426-1-PBS was coated to a plate as the capture antibody and incubated with serial dilutions of standard Ag7144. 85426-2-PBS was HRP conjugated as the detection antibody. Range: 0.791-50 ng/mL.



The mean ALDH1B1 concentration was determined to be 124.73 ng/mL in HeLa cell extract based on a 1.80 mg/mL extract load, 191.33 ng/mL in HepG2 cell extract based on a 1.80 mg/mL extract load and 74.97 ng/mL in K-562 cell extract based on a 2.50 mg/mL extract load.



Cytometric bead array standard curve of MP01995-2, ALDH1B1 Recombinant Matched Antibody Pair, PBS Only. Capture antibody: 85426-1-PBS. Detection antibody: 85426-3-PBS. Standard: Ag7144. Range: 0.781-100 ng/mL.



Cytometric bead array standard curve of MP01995-1, ALDH1B1 Recombinant Matched Antibody Pair, PBS Only. Capture antibody: 85426-1-PBS. Detection antibody: 85426-2-PBS. Standard: Ag7144. Range: 0.781-100 ng/mL.