

For Research Use Only

# LAMP3/CD208 Recombinant antibody, PBS Only (Detector)

Catalog Number:85398-3-PBS



## Basic Information

**Catalog Number:**

85398-3-PBS

**Size:**

100ug , Concentration: 1 mg/ml by  
Nanodrop;

**Source:**

Rabbit

**Isotype:**

IgG

**GenBank Accession Number:**

NM\_014398.4

**GeneID (NCBI):**

27074

**UNIPROT ID:**

Q9UQV4

**Full Name:**

lysosomal-associated membrane  
protein 3

**Calculated MW:**

44 kDa

**Purification Method:**

Protein A purification

**CloneNo.:**

242748F3

## Applications

**Tested Applications:**

Cytometric bead array, Sandwich ELISA, Indirect ELISA,  
Sample test

**Species Specificity:**

human

## Product Information

85398-3-PBS targets LAMP3/CD208 as part of a matched antibody pair:

MP01929-1: 85398-2-PBS capture and 85398-3-PBS detection (validated in Cytometric bead array, Sandwich ELISA)

Unconjugated rabbit recombinant monoclonal antibody in PBS only (BSA and azide free) storage buffer at a concentration of 1 mg/mL, ready for conjugation. Created using Proteintech's proprietary in-house recombinant technology. Recombinant production enables unrivalled batch-to-batch consistency, easy scale-up, and future security of supply.

This conjugation ready format makes antibodies ideal for use in many applications including: ELISAs, multiplex assays requiring matched pairs, mass cytometry, and multiplex imaging applications. Antibody use should be optimized by the end user for each application and assay.

## Storage

**Storage:**

Store at -80°C.

**Storage Buffer:**

PBS Only

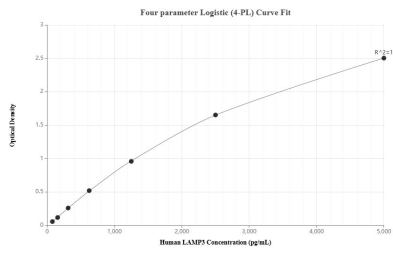
For technical support and original validation data for this product please contact:

T: 1 (888) 4PTGLAB (1-888-478-4522) (toll free  
in USA), or 1(312) 455-8498 (outside USA)

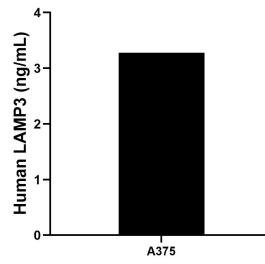
E: [proteintech@ptglab.com](mailto:proteintech@ptglab.com)  
W: [ptglab.com](http://ptglab.com)

**This product is exclusively available under Proteintech Group brand and is not available to purchase from any other manufacturer.**

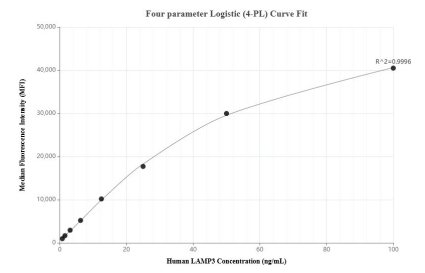
## Selected Validation Data



Sandwich ELISA standard curve of MP01929-1, Human LAMP3 Recombinant Matched Antibody Pair - PBS only. 85398-2-PBS was coated to a plate as the capture antibody and incubated with serial dilutions of standard Eg3594. 85398-3-PBS was HRP conjugated as the detection antibody. Range: 78.1-5000 pg/mL



The mean LAMP3 concentration was determined to be 3.28 ng/mL in A375 cell extract based on a 1.8 mg/mL extract load.



Cytometric bead array standard curve of MP01929-1, LAMP3 Recombinant Matched Antibody Pair, PBS Only. Capture antibody: 85398-2-PBS. Detection antibody: 85398-3-PBS. Standard: Eg3594. Range: 0.781-100 ng/mL