

For Research Use Only

# LAMP3/CD208 Recombinant antibody, PBS Only (Capture)

Catalog Number:85398-2-PBS



## Basic Information

|  |   |   |
|--|---|---|
| <b>Catalog Number:</b><br>85398-2-PBS                          | <b>GenBank Accession Number:</b><br>NM_014398.4                 | <b>Purification Method:</b><br>Protein A purification |
| <b>Size:</b><br>100ug , Concentration: 1 mg/ml by<br>Nanodrop; | <b>GeneID (NCBI):</b><br>27074                                  | <b>CloneNo.:</b><br>242748C1                          |
| <b>Source:</b><br>Rabbit                                       | <b>UNIPROT ID:</b><br>Q9UQV4                                    |   |
| <b>Isotype:</b><br>IgG   | <b>Full Name:</b><br>lysosomal-associated membrane<br>protein 3 |   |
|  | <b>Calculated MW:</b><br>44 kDa                                 |   |

## Applications

**Tested Applications:**  
Cytometric bead array, Sandwich ELISA, Indirect ELISA,  
Sample test

**Species Specificity:**  
human

## Product Information

85398-2-PBS targets LAMP3/CD208 as part of a matched antibody pair:

MP01929-1: 85398-2-PBS capture and 85398-3-PBS detection (validated in Cytometric bead array, Sandwich ELISA)

MP01929-2: 85398-2-PBS capture and 85398-1-PBS detection (validated in Cytometric bead array)

Unconjugated rabbit recombinant monoclonal antibody in PBS only (BSA and azide free) storage buffer at a concentration of 1 mg/mL, ready for conjugation. Created using Proteintech's proprietary in-house recombinant technology. Recombinant production enables unrivalled batch-to-batch consistency, easy scale-up, and future security of supply.

This conjugation ready format makes antibodies ideal for use in many applications including: ELISAs, multiplex assays requiring matched pairs, mass cytometry, and multiplex imaging applications. Antibody use should be optimized by the end user for each application and assay.

## Storage

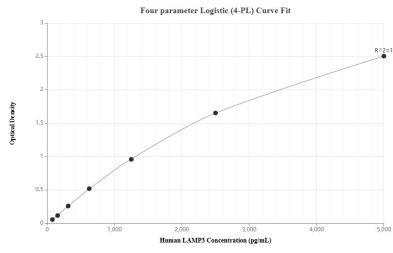
**Storage:**  
Store at -80°C.

**Storage Buffer:**  
PBS Only

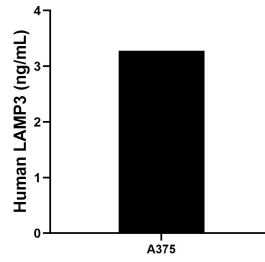
For technical support and original validation data for this product please contact:  
T: 1 (888) 4PTGLAB (1-888-478-4522) (toll free in USA), or 1(312) 455-8498 (outside USA)      E: proteintech@ptglab.com  
W: ptglab.com

**This product is exclusively available under Proteintech Group brand and is not available to purchase from any other manufacturer.**

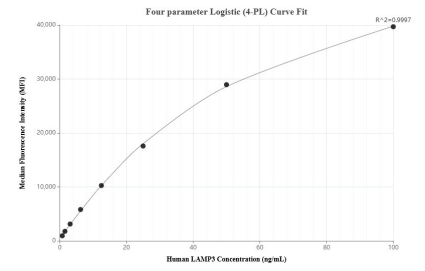
## Selected Validation Data



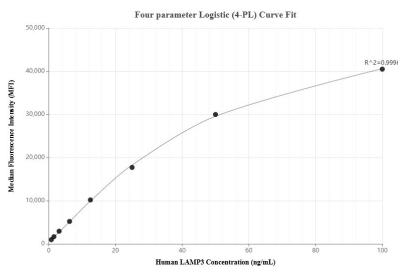
Sandwich ELISA standard curve of MP01929-1, Human LAMP3 Recombinant Matched Antibody Pair - PBS only. 85398-2-PBS was coated to a plate as the capture antibody and incubated with serial dilutions of standard Eg3594. 85398-3-PBS was HRP conjugated as the detection antibody. Range: 78.1-5000 pg/mL



The mean LAMP3 concentration was determined to be 3.28 ng/mL in A375 cell extract based on a 1.8 mg/mL extract load.



Cytometric bead array standard curve of MP01929-2, LAMP3 Recombinant Matched Antibody Pair, PBS Only. Capture antibody: 85398-2-PBS. Detection antibody: 85398-1-PBS. Standard: Eg3594. Range: 0.781-100 ng/mL



Cytometric bead array standard curve of MP01929-1, LAMP3 Recombinant Matched Antibody Pair, PBS Only. Capture antibody: 85398-2-PBS. Detection antibody: 85398-3-PBS. Standard: Eg3594. Range: 0.781-100 ng/mL