

For Research Use Only

# SMAD1 Recombinant antibody

Catalog Number: 85388-1-RR



## Basic Information

Catalog Number:

85388-1-RR

Size:

100ul, Concentration: 1000 ug/ml by Nanodrop;

Source:

Rabbit

Isotype:

IgG

Immunogen Catalog Number:

AG0701

GenBank Accession Number:

BC001878

GeneID (NCBI):

4086

UNIPROT ID:

Q15797

Full Name:

SMAD family member 1

Calculated MW:

52 kDa

Observed MW:

55 kDa

Purification Method:

Protein A purification

CloneNo.:

242844B4

Recommended Dilutions:

WB: 1:5000-1:50000

FC (Intra): 0.25 ug per 10<sup>6</sup> cells in a 100 µl suspension

## Applications

Tested Applications:

WB, FC (Intra), ELISA

Species Specificity:

human, mouse, rat

Positive Controls:

WB : HeLa cells, HepG2 cells, HEK-293 cells, HUVEC cells, HT-1080 cells, RAW264.7 cells, HSC-T6 cells

FC (Intra) : HeLa cells,

## Background Information

Transforming growth factor- $\beta$  (TGF- $\beta$ ) superfamily is recognized as one of the largest families of secreted multifunctional peptides exerting different biological effects on a large variety of cell types, such as regulation of hormone secretion, stimulation of extracellular matrix formation, the inhibition of proliferation of many cell types, cell survival, bone formation, and chemotaxis for inflammatory cells. One of the most important proteins that modulate TGF- $\beta$  ligand activity is the SMAD family proteins. SMAD1 is one of the receptor-activated Smads. It's also a signal transducers of BMP signaling and binds to several proteins involved in ubiquitin-proteasome system (UPS). Transcriptional modulator activated by BMP (bone morphogenetic proteins) type 1 receptor kinase.

## Storage

Storage:

Store at -20°C. Stable for one year after shipment.

Storage Buffer:

PBS with 0.02% sodium azide and 50% glycerol, pH7.3

Aliquoting is unnecessary for -20°C storage

\*\*\* 20ul sizes contain 0.1% BSA

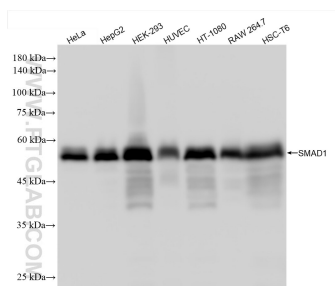
For technical support and original validation data for this product please contact:

T: 1 (888) 4PTGLAB (1-888-478-4522) (toll free in USA), or 1(312) 455-8498 (outside USA)

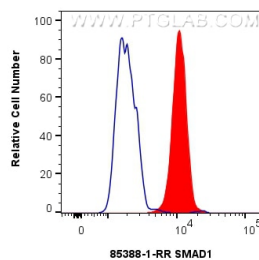
E: [proteintech@ptglab.com](mailto:proteintech@ptglab.com)  
W: [ptglab.com](http://ptglab.com)

This product is exclusively available under Proteintech Group brand and is not available to purchase from any other manufacturer.

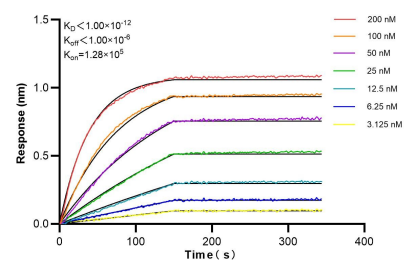
## Selected Validation Data



Various lysates were subjected to SDS PAGE followed by western blot with 85388-1-RR (SMAD1 antibody) at dilution of 1:10000 incubated at room temperature for 1.5 hours.



1x10<sup>6</sup> HeLa cells were intracellularly stained with 0.25 ug SMAD1 Recombinant antibody (85388-1-RR, Clone:242844B4) and Coralite® 488-Conjugated Goat Anti-Rabbit IgG(H+L) (SA00013-2)(red), or 0.25 ug Rabbit IgG Isotype Control RecAb (98136-1-RR, Clone: 240953C9) (blue). Cells were fixed with 4% PFA and permeabilized with Flow Cytometry Perm Buffer (PF00011-C).



Biolayer interferometry (BLI) kinetic assays of 85388-1-RR against Human SMAD1 were performed. The affinity constant is below 1 pM.