

For Research Use Only

SYN1-Specific Recombinant antibody

Catalog Number:85360-1-RR



Basic Information

Catalog Number: 85360-1-RR	GenBank Accession Number: NM_006950	Purification Method: Protein A purification
Size: 100ul , Concentration: 1000 µg/ml by Nanodrop;	GeneID (NCBI): 6853	CloneNo.: 242415H5
Source: Rabbit	UNIPROT ID: P17600	Recommended Dilutions: WB 1:5000-1:50000 IF-P 1:200-1:800
Isotype: IgG	Full Name: synapsin I	
	Calculated MW: 74 kDa	
	Observed MW: 70-80 kDa	

Applications

Tested Applications: WB, IF-P, ELISA	Positive Controls: WB : IMR-32 cells, SH-SY5Y cells, SK-N-SH cells IF-P : mouse retina tissue,
Species Specificity: human, mouse	

Background Information

SYN1, also named Brain protein 4.1, belongs to the synapsin family. SYN1 is a neuronal phosphoprotein that coats synaptic vesicles, binds to the cytoskeleton, and is believed to function in the regulation of neurotransmitter release. The complex formed with NOS1 and CAPON proteins is necessary for specific nitric-oxid functions at a presynaptic level. Defects in SYN1 are a cause of epilepsy X-linked with variable learning disabilities and behavior disorders (XELBD).

Storage

Storage:
Store at -20°C. Stable for one year after shipment.
Storage Buffer:
PBS with 0.02% sodium azide and 50% glycerol
Aliquoting is unnecessary for -20°C storage

*** 20ul sizes contain 0.1% BSA

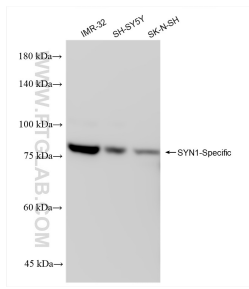
For technical support and original validation data for this product please contact:

T: 1 (888) 4PTGLAB (1-888-478-4522) (toll free in USA), or 1(312) 455-8498 (outside USA)

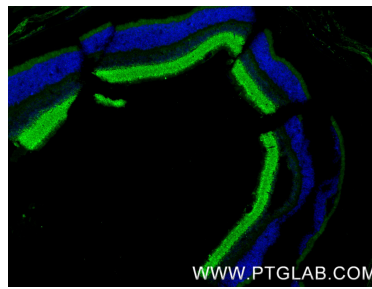
E: proteintech@ptglab.com
W: ptglab.com

This product is exclusively available under Proteintech Group brand and is not available to purchase from any other manufacturer.

Selected Validation Data



Various lysates were subjected to SDS PAGE followed by western blot with 85360-1-RR (SYN1-Specific antibody) at dilution of 1:10000 incubated at room temperature for 1.5 hours.



Immunofluorescent analysis of (4% PFA) fixed paraffin-embedded mouse retina tissue using SYN1-Specific antibody (85360-1-RR, Clone: 242415H5) at dilution of 1:400 and CoraLite®488-Conjugated Goat Anti-Rabbit IgG(H+L) (SA00013-2). Heat mediated antigen retrieval with Tris-EDTA buffer (pH 9.0).