

For Research Use Only

Cleaved Caspase 7/P20 Recombinant antibody

Catalog Number:85328-2-RR



Basic Information

Catalog Number: 85328-2-RR	GenBank Accession Number: BC015799	Purification Method: Protein A purification
Size: 100ul , Concentration: 1000 µg/ml by Nanodrop;	GeneID (NCBI): 840	CloneNo.: 242407F6
Source: Rabbit	UNIPROT ID: P55210	Recommended Dilutions: WB 1:1000-1:4000
Isotype: IgG	Full Name: caspase 7, apoptosis-related cysteine peptidase	
	Calculated MW: 303 aa, 34 kDa	
	Observed MW: 20 kDa	

Applications

Tested Applications: WB, ELISA	Positive Controls: WB : Staurosporine treated Jurkat cells,
Species Specificity: human	

Background Information

Caspase 7(CASP7), like caspases 3 and 6, contains a short prodomain and, upon apoptotic induction, the 35 kDa proform is converted into a 32 kDa intermediate or preactive form which is further processed into two active subunits consisting of the p20 or large (18 kDa) subunit and the p10 or small (11 kDa) subunit and it is present in the brain, which is up-regulated and activated after traumatic injury(PMID:15953353). Caspase-7 is classified as a member of the subgroup of cysteine proteases most related to the Caenorhabditis elegans factor CED-3, which also includes caspase-3, -6, and -9(PMID:9426061). The protein is involved in the activation cascade of caspases responsible for apoptosis execution. This antibody recognize the cleaved caspase 7.

Storage

Storage:
Store at -20°C. Stable for one year after shipment.
Storage Buffer:
PBS with 0.02% sodium azide and 50% glycerol
Aliquoting is unnecessary for -20°C storage

*** 20ul sizes contain 0.1% BSA

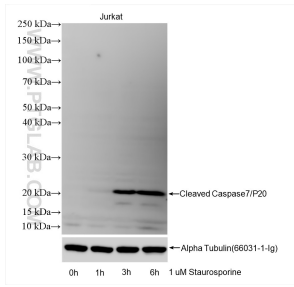
For technical support and original validation data for this product please contact:

T: 1 (888) 4PTGLAB (1-888-478-4522) (toll free in USA), or 1(312) 455-8498 (outside USA)

E: proteintech@ptglab.com
W: ptglab.com

This product is exclusively available under Proteintech Group brand and is not available to purchase from any other manufacturer.

Selected Validation Data



Various lysates were subjected to SDS PAGE followed by western blot with 85328-2-RR (Cleaved Caspase 7/P20 antibody) at dilution of 1:2000 incubated at room temperature for 1.5 hours.