

For Research Use Only

OAT Recombinant antibody, PBS Only (Capture)

Catalog Number:85218-3-PBS



Basic Information

Catalog Number: 85218-3-PBS	GenBank Accession Number: BC000964	Purification Method: Protein A purification
Size: 100ug , Concentration: 1 mg/ml by Nanodrop;	GeneID (NCBI): 4942	CloneNo.: 242843G1
Source: Rabbit	UNIPROT ID: P04181	
Isotype: IgG	Full Name: ornithine aminotransferase (gyrate atrophy)	
Immunogen Catalog Number: AG9981	Calculated MW: 48 kDa	

Applications

Tested Applications:
Cytometric bead array, Sandwich ELISA, Indirect ELISA, Sample test

Species Specificity:
human

Product Information

85218-3-PBS targets OAT as part of a matched antibody pair:

MP01910-1: 85218-3-PBS capture and 85218-1-PBS detection (validated in Cytometric bead array)

MP01910-2: 85218-3-PBS capture and 85218-2-PBS detection (validated in Cytometric bead array)

MP01910-3: 85218-3-PBS capture and 85218-5-PBS detection (validated in Sandwich ELISA)

Unconjugated rabbit recombinant monoclonal antibody in PBS only (BSA and azide free) storage buffer at a concentration of 1 mg/mL, ready for conjugation. Created using Proteintech's proprietary in-house recombinant technology. Recombinant production enables unrivalled batch-to-batch consistency, easy scale-up, and future security of supply.

This conjugation ready format makes antibodies ideal for use in many applications including: ELISAs, multiplex assays requiring matched pairs, mass cytometry, and multiplex imaging applications. Antibody use should be optimized by the end user for each application and assay.

Storage

Storage:
Store at -80°C.
Storage Buffer:
PBS Only

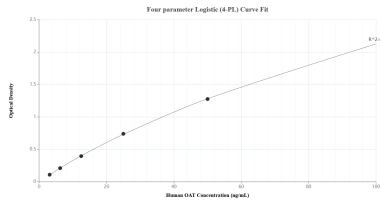
For technical support and original validation data for this product please contact:

T: 1 (888) 4PTGLAB (1-888-478-4522) (toll free in USA), or 1(312) 455-8498 (outside USA)

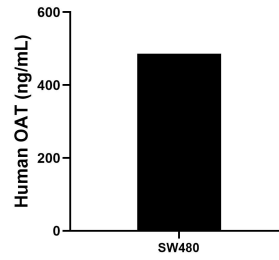
E: proteintech@ptglab.com
W: ptglab.com

This product is exclusively available under Proteintech Group brand and is not available to purchase from any other manufacturer.

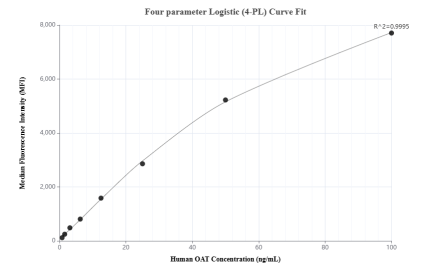
Selected Validation Data



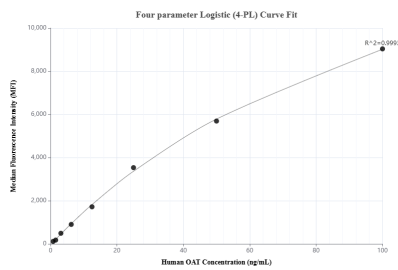
Sandwich ELISA standard curve of MP01910-3, Human OAT Recombinant Matched Antibody Pair - PBS only. 85218-3-PBS was coated to a plate as the capture antibody and incubated with serial dilutions of standard Ag9981. 85218-5-PBS was HRP conjugated as the detection antibody. Range: 3.13-100 ng/mL



The mean OAT concentration was determined to be 485.72 ng/mL in SW480 cell extract based on a 1.50 mg/mL extract load.



Cytometric bead array standard curve of MP01910-2, OAT Recombinant Matched Antibody Pair, PBS Only. Capture antibody: 85218-3-PBS. Detection antibody: 85218-2-PBS. Standard: Ag9981. Range: 0.781-100 ng/mL



Cytometric bead array standard curve of MP01910-1, OAT Recombinant Matched Antibody Pair, PBS Only. Capture antibody: 85218-3-PBS. Detection antibody: 85218-1-PBS. Standard: Ag9981. Range: 0.781-100 ng/mL