

For Research Use Only

CCKAR-specific Recombinant antibody, PBS Only (Detector)

Catalog Number: 85205-1-PBS



Basic Information

Catalog Number: 85205-1-PBS	GenBank Accession Number: NM_000730	Purification Method: Protein A purification
Size: 100ug , Concentration: 1 mg/ml by Nanodrop;	GeneID (NCBI): 886	CloneNo.: 242681A12
Source: Rabbit	UNIPROT ID: P32238	
Isotype: IgG	Full Name: cholecystokinin A receptor	
	Calculated MW: 48 kDa	
	Observed MW: 75 kDa	

Applications

Tested Applications:
WB, IP, Sandwich ELISA, Indirect ELISA, Sample test

Species Specificity:
human, mouse, rat

Product Information

85205-1-PBS targets CCKAR-specific as part of a matched antibody pair:

MP01958-1: 85205-2-PBS capture and 85205-1-PBS detection (validated in Sandwich ELISA)

Unconjugated rabbit recombinant monoclonal antibody in PBS only (BSA and azide free) storage buffer at a concentration of 1 mg/mL, ready for conjugation. Created using Proteintech's proprietary in-house recombinant technology. Recombinant production enables unrivalled batch-to-batch consistency, easy scale-up, and future security of supply.

This conjugation ready format makes antibodies ideal for use in many applications including: ELISAs, multiplex assays requiring matched pairs, mass cytometry, and multiplex imaging applications. Antibody use should be optimized by the end user for each application and assay.

Background Information

Cholecystokinin (CCK) receptor, including CCKAR and CCKBR, is a receptor for cholecystokinin, mainly regulating pancreatic growth and enzyme secretion, and smooth muscle contraction of the gallbladder and stomach (PMID: 34556863). CCKAR (Cholecystokinin receptor type A) is primarily expressed in the alimentary tract, while CCKBR is mainly found in the brain and the stomach (PMID: 16816139). CCKAR is a biomarker for prognosis and asynchronous brain metastasis of non-small cell lung cancer (PMID: 36733361). The calculated MW of CCKAR is 48 kDa, but the observed MW is around 75 kDa, which may be with glycosylation modification.

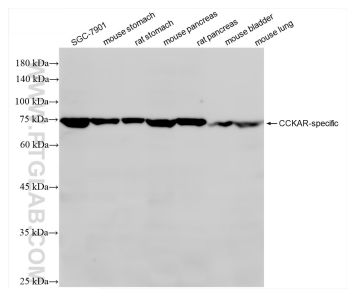
Storage

Storage:
Store at -80°C.
Storage Buffer:
PBS Only

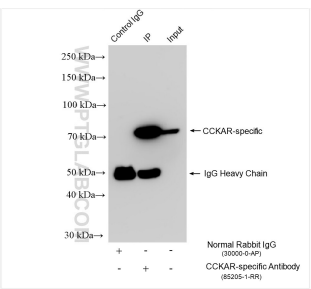
For technical support and original validation data for this product please contact:
T: 1 (888) 4PTGLAB (1-888-478-4522) (toll free in USA), or 1(312) 455-8498 (outside USA)
E: proteintech@ptglab.com
W: ptglab.com

This product is exclusively available under Proteintech Group brand and is not available to purchase from any other manufacturer.

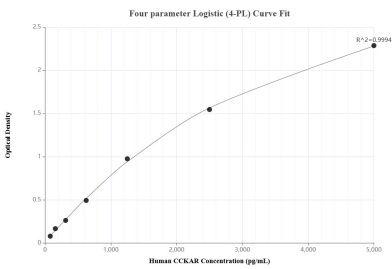
Selected Validation Data



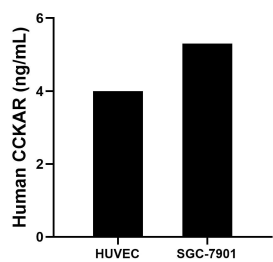
Various lysates were subjected to SDS PAGE followed by western blot with 85205-1-RR (CCKAR-specific antibody) at dilution of 1:2000 incubated at room temperature for 1.5 hours. This data was developed using the same antibody clone with 85205-1-PBS in a different storage buffer formulation.



IP result of anti-CCKAR-specific (IP:85205-1-RR, 4ug; Detection:85205-1-RR 1:600) with mouse lung tissue lysate 1520 ug. This data was developed using the same antibody clone with 85205-1-PBS in a different storage buffer formulation.



Sandwich ELISA standard curve of MP01958-1, Human CCKAR Recombinant Matched Antibody Pair - PBS only. 85205-2-PBS was coated to a plate as the capture antibody and incubated with serial dilutions of standard SY00105. 85205-1-PBS was HRP conjugated as the detection antibody. Range: 78.1-5000 pg/mL.



The mean CCKAR concentration was determined to be 4.0 ng/mL in HUVEC cell extract based on a 0.9 mg/mL extract load and 5.3 ng/mL in SGC-7901 cell extract based on a 2.4 mg/mL extract load.