

For Research Use Only

Filamin B Recombinant antibody, PBS Only (Capture)

Catalog Number:85202-2-PBS



Basic Information

Catalog Number: 85202-2-PBS	GenBank Accession Number: NM_001457	Purification Method: Protein A purification
Size: 100ug , Concentration: 1 mg/ml by Nanodrop;	GeneID (NCBI): 2317	CloneNo.: 242275E7
Source: Rabbit	UNIPROT ID: O75369	
Isotype: IgG	Full Name: filamin B, beta (actin binding protein 278)	
	Calculated MW: 278 kDa	

Applications

Tested Applications:
Sandwich ELISA, Indirect ELISA, Sample test

Species Specificity:
human

Product Information

85202-2-PBS targets Filamin B as part of a matched antibody pair:

MP01960-1: 85202-2-PBS capture and 85202-1-PBS detection (validated in Sandwich ELISA)

Unconjugated rabbit recombinant monoclonal antibody in PBS only (BSA and azide free) storage buffer at a concentration of 1 mg/mL, ready for conjugation. Created using Proteintech's proprietary in-house recombinant technology. Recombinant production enables unrivalled batch-to-batch consistency, easy scale-up, and future security of supply.

This conjugation ready format makes antibodies ideal for use in many applications including: ELISAs, multiplex assays requiring matched pairs, mass cytometry, and multiplex imaging applications. Antibody use should be optimized by the end user for each application and assay.

Storage

Storage:
Store at -80°C.
Storage Buffer:
PBS Only

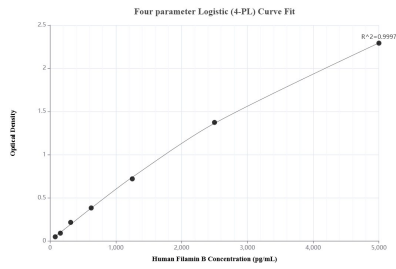
For technical support and original validation data for this product please contact:

T: 1 (888) 4PTGLAB (1-888-478-4522) (toll free in USA), or 1(312) 455-8498 (outside USA)

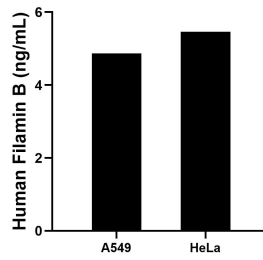
E: proteintech@ptglab.com
W: ptglab.com

This product is exclusively available under Proteintech Group brand and is not available to purchase from any other manufacturer.

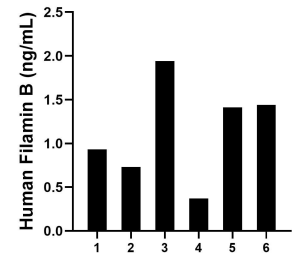
Selected Validation Data



Sandwich ELISA standard curve of MP01960-1, Human Filamin B Recombinant Matched Antibody Pair - PBS only. 85202-2-PBS was coated to a plate as the capture antibody and incubated with serial dilutions of standard SY00901. 85202-1-PBS was HRP conjugated as the detection antibody. Range: 78.1-5000 pg/mL



The mean Filamin B concentration was determined to be 4.9 ng/mL in A549 cell extract based on a 2.6 mg/mL extract load and 5.5 ng/mL in HeLa cell extract based on a 1.5 mg/mL extract load.



Serum of six individual healthy human donors was measured. The Filamin B concentration of detected samples was determined to be 1.1 ng/mL with a range of 0.4-1.9 ng/mL.