

For Research Use Only

Filamin B Recombinant antibody, PBS Only (Detector)

Catalog Number:85202-1-PBS



Basic Information

Catalog Number: 85202-1-PBS	GenBank Accession Number: NM_001457	Purification Method: Protein A purification
Size: 100ug, Concentration: 1 mg/ml by Nanodrop;	GeneID (NCBI): 2317	CloneNo.: 242275B7
Source: Rabbit	UNIPROT ID: O75369	
Isotype: IgG	Full Name: filamin B, beta (actin binding protein 278)	
	Calculated MW: 278 kDa	

Applications

Tested Applications:
IF/ICC, FC (Intra), Sandwich ELISA, Indirect ELISA, Sample test

Species Specificity:
human

Product Information

85202-1-PBS targets Filamin B as part of a matched antibody pair:

MP01960-1: 85202-2-PBS capture and 85202-1-PBS detection (validated in Sandwich ELISA)

Unconjugated rabbit recombinant monoclonal antibody in PBS only (BSA and azide free) storage buffer at a concentration of 1 mg/mL, ready for conjugation. Created using Proteintech's proprietary in-house recombinant technology. Recombinant production enables unrivalled batch-to-batch consistency, easy scale-up, and future security of supply.

This conjugation ready format makes antibodies ideal for use in many applications including: ELISAs, multiplex assays requiring matched pairs, mass cytometry, and multiplex imaging applications. Antibody use should be optimized by the end user for each application and assay.

Background Information

FLNB, also named as FLN1L, FLN3, TABP, TAP and Fh1, belongs to the filamin family. FLNB connects cell membrane constituents to the actin cytoskeleton. It may promote orthogonal branching of actin filaments and links actin filaments to membrane glycoproteins. It is an anchors various transmembrane proteins to the actin cytoskeleton. Interaction with FLNA, FLNB may allow neuroblast migration from the ventricular zone into the cortical plate. Various interactions and localizations of isoforms affect myotube morphology and myogenesis.

Storage

Storage:
Store at -80°C.
Storage Buffer:
PBS Only

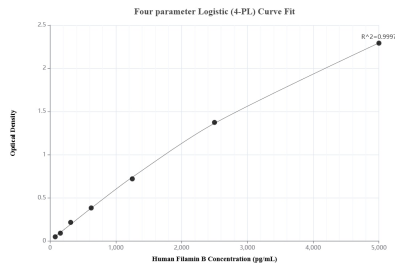
For technical support and original validation data for this product please contact:

T: 1 (888) 4PTGLAB (1-888-478-4522) (toll free in USA), or 1(312) 455-8498 (outside USA)

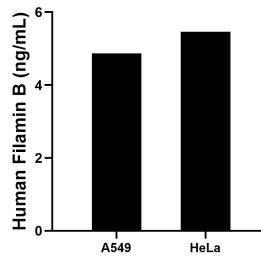
E: proteintech@ptglab.com
W: ptglab.com

This product is exclusively available under Proteintech Group brand and is not available to purchase from any other manufacturer.

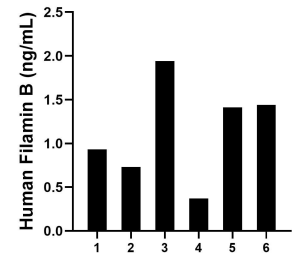
Selected Validation Data



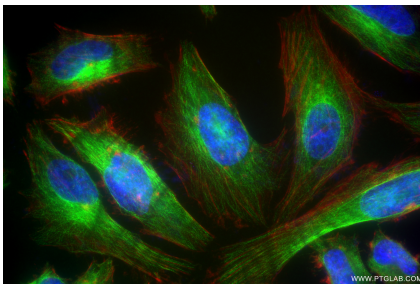
Sandwich ELISA standard curve of MP01960-1, Human Filamin B Recombinant Matched Antibody Pair - PBS only. 85202-2-PBS was coated to a plate as the capture antibody and incubated with serial dilutions of standard SY00901. 85202-1-PBS was HRP conjugated as the detection antibody. Range: 78.1-5000 pg/mL



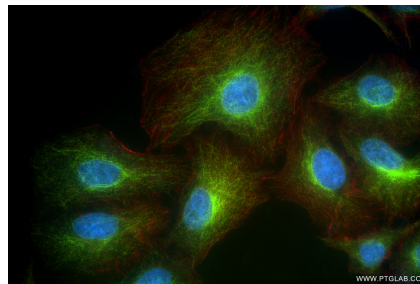
The mean Filamin B concentration was determined to be 4.9 ng/mL in A549 cell extract based on a 2.6 mg/mL extract load and 5.5 ng/mL in HeLa cell extract based on a 1.5 mg/mL extract load.



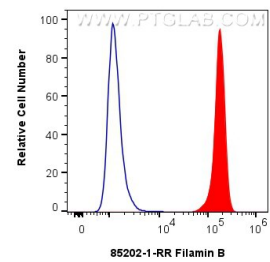
Serum of six individual healthy human donors was measured. The Filamin B concentration of detected samples was determined to be 1.1 ng/mL with a range of 0.4-1.9 ng/mL.



Immunofluorescent analysis of (4% PFA) fixed HeLa cells using Filamin B antibody (85202-1-RR, Clone: 242275B7) at dilution of 1:500 and CoraLite®488-Conjugated Goat Anti-Rabbit IgG(H+L) (SA00013-2), CL594-Phalloidin (red). This data was developed using the same antibody clone with 85202-1-PBS in a different storage buffer formulation.



Immunofluorescent analysis of (4% PFA) fixed A549 cells using Filamin B antibody (85202-1-RR, Clone: 242275B7) at dilution of 1:500 and CoraLite®488-Conjugated Goat Anti-Rabbit IgG(H+L) (SA00013-2), CL594-Phalloidin (red). This data was developed using the same antibody clone with 85202-1-PBS in a different storage buffer formulation.



1x10⁶ HEK-293T cells were intracellularly stained with 0.25 ug Filamin B Recombinant antibody (85202-1-RR, Clone:242275B7) and CoraLite®488-Conjugated Goat Anti-Rabbit IgG(H+L) (SA00013-2)(red), or 0.25 ug Rabbit IgG Isotype Control RecAb (98136-1-RR, Clone: 240953C9) (blue). Cells were fixed with 4% PFA and permeabilized with Flow Cytometry Perm Buffer (PF00011-C). This data was developed using the same antibody clone with 85202-1-PBS in a

