

For Research Use Only

Caspase 6 Recombinant antibody, PBS Only

Catalog Number: 85201-2-PBS



Basic Information

Catalog Number:

85201-2-PBS

Size:

100ug, Concentration: 1 mg/ml by Nanodrop;

Source:

Rabbit

Isotype:

IgG

GenBank Accession Number:

BC000305

GeneID (NCBI):

839

UNIPROT ID:

P55212

Full Name:

caspase 6, apoptosis-related cysteine peptidase

Calculated MW:

33 kDa, 22 kDa

Observed MW:

33 kDa

Purification Method:

Protein A purification

CloneNo.:

242457A8

Applications

Tested Applications:

WB, Indirect ELISA

Species Specificity:

human

Background Information

Caspase-6 belongs to caspase family of cysteinyl-aspartate specific proteases. Precursor of CASP6 produces two subunits, large (18kDa) and small (16kDa) that dimerize. It cleaves poly(ADP-ribose) polymerase, as well as lamins and is involved in the activation cascade of caspases responsible for apoptosis execution. Researches showed that CASP6 could be an early instigator of neuronal dysfunction and regulates B cell activation and differentiation into plasma cells by modifying cell cycle entry. IRAK3 is an important target for CASP6. It can reveal five bands of 28, 32, 36, 49, and 64 kDa in human neurons and fetal brain in western blot, the 32 and 28 kDa bands represent procaspase-6 and pro-arm caspase-6. Procaspase-6 is more abundant than pro-arm caspase-6 in adult tissue, whereas pro-arm caspase-6 is more abundant than pro-caspase-6 in fetal brain and cultured neurons.

Storage

Storage:

Store at -80°C.

Storage Buffer:

PBS Only

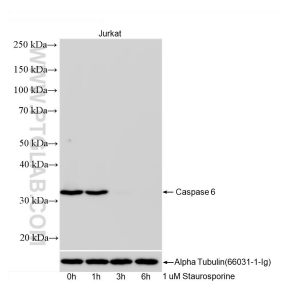
For technical support and original validation data for this product please contact:

T: 1 (888) 4PTGLAB (1-888-478-4522) (toll free in USA), or 1(312) 455-8498 (outside USA)

E: proteintech@ptglab.com
W: ptglab.com

This product is exclusively available under Proteintech Group brand and is not available to purchase from any other manufacturer.

Selected Validation Data



Jurkat cells were subjected to SDS PAGE followed by western blot with 85201-2-RR (Caspase 6 antibody) at dilution of 1:3000 incubated at room temperature for 1.5 hours. This data was developed using the same antibody clone with 85201-2-PBS in a different storage buffer formulation.