

For Research Use Only

# NSMCE2 Recombinant antibody, PBS Only (Capture)

Catalog Number:85188-4-PBS



## Basic Information

<b>Catalog Number:</b> 85188-4-PBS	<b>GenBank Accession Number:</b> BC032797	<b>Purification Method:</b> Protein A purification
<b>Size:</b> 100ug , Concentration: 1 mg/ml by Nanodrop;	<b>GeneID (NCBI):</b> 286053	<b>CloneNo.:</b> 242862D8
<b>Source:</b> Rabbit	<b>UNIPROT ID:</b> Q96MF7	
<b>Isotype:</b> IgG	<b>Full Name:</b> non-SMC element 2, MMS21 homolog (S. cerevisiae)	
<b>Immunogen Catalog Number:</b> AG4545	<b>Calculated MW:</b> 247 aa, 28 kDa	
	<b>Observed MW:</b> 28-32 kDa	

## Applications

**Tested Applications:**  
WB, IF/ICC, Sandwich ELISA, Indirect ELISA, Sample test

**Species Specificity:**  
human

## Product Information

85188-4-PBS targets NSMCE2 as part of a matched antibody pair:

MP01897-2: 85188-4-PBS capture and 85188-5-PBS detection (validated in Sandwich ELISA)

Unconjugated rabbit recombinant monoclonal antibody in PBS only (BSA and azide free) storage buffer at a concentration of 1 mg/mL, ready for conjugation. Created using Proteintech's proprietary in-house recombinant technology. Recombinant production enables unrivalled batch-to-batch consistency, easy scale-up, and future security of supply.

This conjugation ready format makes antibodies ideal for use in many applications including: ELISAs, multiplex assays requiring matched pairs, mass cytometry, and multiplex imaging applications. Antibody use should be optimized by the end user for each application and assay.

## Background Information

NSMCE2 (E3 SUMO-protein ligase NSE2) has a C-terminal Siz/PIAS-RING (SP-RING) domain with E3 SUMO ligase activity (PMID: 15601841). NSMCE2, an essential SUMO ligase of the SMC5/6 complex suppresses cancer and aging in mice (PMID: 26443207).

## Storage

**Storage:**  
Store at -80°C.

**Storage Buffer:**  
PBS Only

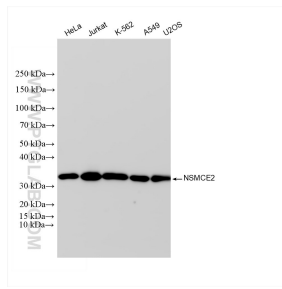
For technical support and original validation data for this product please contact:

T: 1 (888) 4PTGLAB (1-888-478-4522) (toll free in USA), or 1(312) 455-8498 (outside USA)

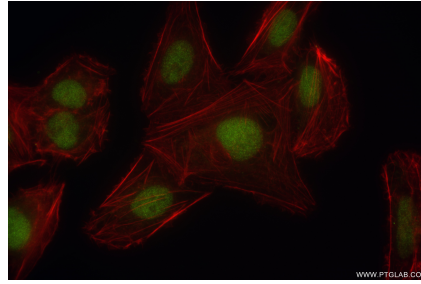
E: [proteintech@ptglab.com](mailto:proteintech@ptglab.com)  
W: [ptglab.com](http://ptglab.com)

**This product is exclusively available under Proteintech Group brand and is not available to purchase from any other manufacturer.**

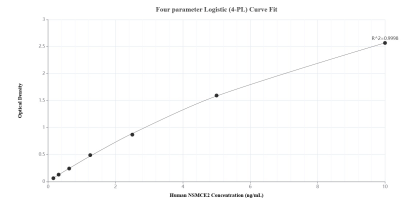
## Selected Validation Data



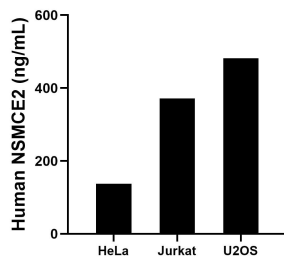
Various lysates were subjected to SDS PAGE followed by western blot with 85188-4-RR (NSMCE2 antibody) at dilution of 1:10000 incubated at room temperature for 1.5 hours. This data was developed using the same antibody clone with 85188-4-PBS in a different storage buffer formulation.



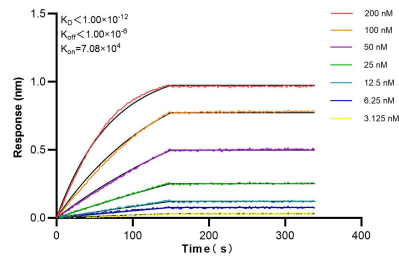
Immunofluorescent analysis of (4% PFA) fixed U2OS cells using NSMCE2 antibody (85188-4-RR, Clone: 242862D8) at dilution of 1:500 and CoraLite® 488-Conjugated Goat Anti-Rabbit IgG(H+L) (SA00013-2), CL594-Phalloidin (red). This data was developed using the same antibody clone with 85188-4-PBS in a different storage buffer formulation.



Sandwich ELISA standard curve of MP01897-2, Human NSMCE2 Recombinant Matched Antibody Pair - PBS only. 85188-4-PBS was coated to a plate as the capture antibody and incubated with serial dilutions of standard Ag4545. 85188-5-PBS was HRP conjugated as the detection antibody. Range: 0.156-10 ng/mL



The mean NSMCE2 concentration was determined to be 137.24 ng/mL in HeLa cell extract based on a 1.50 mg/mL extract load, 371.47 ng/mL in Jurkat cell extract based on a 1.90 mg/mL extract load and 481.66 ng/mL in U2OS cell extract based on a 3.50 mg/mL extract load.



Biolayer interferometry (BLI) kinetic assays of 85188-4-RR against Human NSMCE2 were performed. The affinity constant is below 1 pM.