

For Research Use Only

EPS8 Recombinant antibody

Catalog Number: 85184-5-RR



Basic Information

Catalog Number: 85184-5-RR	GenBank Accession Number: BC030010	Purification Method: Protein A purification
Size: 100ul , Concentration: 1000 ug/ml by Nanodrop;	GeneID (NCBI): 2059	CloneNo.: 242835G12
Source: Rabbit	UNIPROT ID: Q12929	Recommended Dilutions: WB: 1:5000-1:50000
Isotype: IgG	Full Name: epidermal growth factor receptor pathway substrate 8	
Immunogen Catalog Number: AG3121	Calculated MW: 822 aa, 92 kDa	
	Observed MW: 97 kDa	

Applications

Tested Applications: WB, ELISA	Positive Controls: WB : NIH/3T3 cells, C2C12 cells
Species Specificity: human, mouse	

Background Information

Epidermal growth factor receptor Pathway Substrate 8 (EPS8) is a crucial regulator of the actin cytoskeleton dynamics accompanying cell motility and invasion. This protein contains one PH domain and one SH3 domain leading to its binding activity with multiple cellular targets. EPS8 can function as a unique actin capping protein specifically required for dendritic cell migration and plays roles in the regulation of axonal filopodia in neuronal development and synapse formation. The EPS8 gene may contribute to the development of a subset of colorectal cancers and could have applications in diagnosis and treatment.

Storage

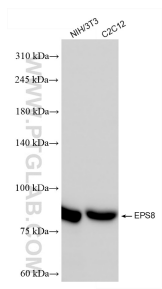
Storage:
Store at -20°C. Stable for one year after shipment.
Storage Buffer:
PBS with 0.02% sodium azide and 50% glycerol, pH7.3
Aliquoting is unnecessary for -20°C storage

*** 20ul sizes contain 0.1% BSA

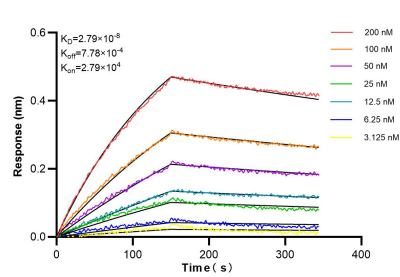
For technical support and original validation data for this product please contact:
T: 1 (888) 4PTGLAB (1-888-478-4522) (toll free in USA), or 1(312) 455-8498 (outside USA)
E: proteintech@ptglab.com
W: ptglab.com

This product is exclusively available under Proteintech Group brand and is not available to purchase from any other manufacturer.

Selected Validation Data



NIH/3T3 cells were subjected to SDS PAGE followed by western blot with 85184-5-RR (EPS8 antibody) at dilution of 1:10000 incubated at room temperature for 1.5 hours.



Biolayer interferometry (BLI) kinetic assays of 85184-5-RR against Human EPS8 were performed. The affinity constant is 27.9 nM.