

For Research Use Only

# PCBP3 Recombinant antibody, PBS Only (Capture/Detector)

Catalog Number: 85180-3-PBS



## Basic Information

<b>Catalog Number:</b> 85180-3-PBS	<b>GenBank Accession Number:</b> BC012061	<b>Purification Method:</b> Protein A purification
<b>Size:</b> 100ug , Concentration: 1 mg/ml by Nanodrop;	<b>GeneID (NCBI):</b> 54039	<b>CloneNo.:</b> 242791F11
<b>Source:</b> Rabbit	<b>UNIPROT ID:</b> P57721	
<b>Isotype:</b> IgG	<b>Full Name:</b> poly(rC) binding protein 3	
<b>Immunogen Catalog Number:</b> AG9202	<b>Calculated MW:</b> 313 aa, 33 kDa	
	<b>Observed MW:</b> 39 kDa	

## Applications

**Tested Applications:**  
WB, Cytometric bead array, Indirect ELISA

**Species Specificity:**  
human, mouse, rat

## Product Information

85180-3-PBS targets PCBP3 as part of a matched antibody pair:

MP01894-1: 85180-2-PBS capture and 85180-3-PBS detection (validated in Cytometric bead array)

MP01894-2: 85180-3-PBS capture and 85180-1-PBS detection (validated in Cytometric bead array)

Unconjugated rabbit recombinant monoclonal antibody in PBS only (BSA and azide free) storage buffer at a concentration of 1 mg/mL, ready for conjugation. Created using Proteintech's proprietary in-house recombinant technology. Recombinant production enables unrivalled batch-to-batch consistency, easy scale-up, and future security of supply.

This conjugation ready format makes antibodies ideal for use in many applications including: ELISAs, multiplex assays requiring matched pairs, mass cytometry, and multiplex imaging applications. Antibody use should be optimized by the end user for each application and assay.

## Background Information

PCBP3 is a member of the KH-domain protein subfamily. Proteins of this subfamily, also referred to as alpha-CPs, bind to RNA with a specificity for C-rich pyrimidine regions. Alpha-CPs play important roles in post-transcriptional activities and have different cellular distributions. PCBP3 is broadly expressed in various tissues, including the testis and endometrium. It has been associated with diseases such as dementia.

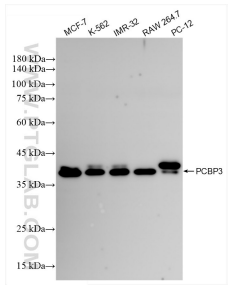
## Storage

**Storage:**  
Store at -80°C.  
**Storage Buffer:**  
PBS only

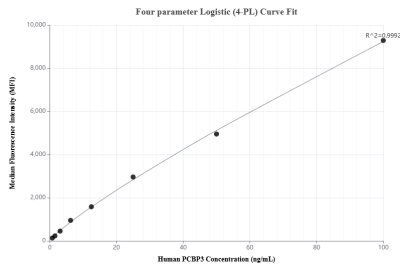
For technical support and original validation data for this product please contact:  
T: 1 (888) 4PTGLAB (1-888-478-4522) (toll free in USA), or 1(312) 455-8498 (outside USA)  
E: [proteintech@ptglab.com](mailto:proteintech@ptglab.com)  
W: [ptglab.com](http://ptglab.com)

This product is exclusively available under Proteintech Group brand and is not available to purchase from any other manufacturer.

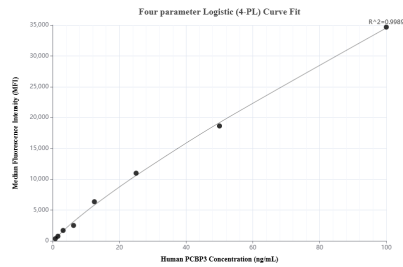
Selected Validation Data



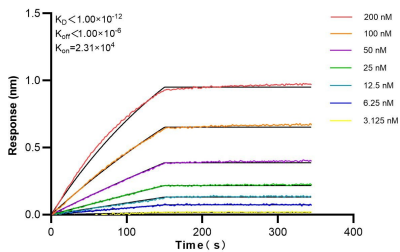
MCF-7 cells were subjected to SDS PAGE followed by western blot with 85180-3-RR (PCBP3 antibody) at dilution of 1:10000 incubated at room temperature for 1.5 hours. This data was developed using the same antibody clone with 85180-3-PBS in a different storage buffer formulation.



Cytometric bead array standard curve of MP01894-2, PCBP3 Recombinant Matched Antibody Pair, PBS Only. Capture antibody: 85180-3-PBS. Detection antibody: 85180-1-PBS. Standard: Ag9202. Range: 0.781-100 ng/mL



Cytometric bead array standard curve of MP01894-1, PCBP3 Recombinant Matched Antibody Pair, PBS Only. Capture antibody: 85180-2-PBS. Detection antibody: 85180-3-PBS. Standard: Ag9202. Range: 0.781-100 ng/mL



Biolayer interferometry (BLI) kinetic assays of 85180-3-RR against Human PCBP3 were performed. The affinity constant is below 1 pM.