

For Research Use Only

HUWE1 Recombinant antibody

Catalog Number: 85177-3-RR



Basic Information

Catalog Number:

85177-3-RR

Size:

100ul, Concentration: 1000 µg/ml by Nanodrop;

Source:

Rabbit

Isotype:

IgG

Immunogen Catalog Number:

AG13763

GenBank Accession Number:

BC002602

GeneID (NCBI):

10075

UNIPROT ID:

Q7Z6Z7

Full Name:

HECT, UBA and WWE domain containing 1

Calculated MW:

437 aa, 482 kDa

Observed MW:

482 kDa

Purification Method:

Protein A purification

CloneNo.:

242702F10

Recommended Dilutions:

WB 1:1000-1:6000

Applications

Tested Applications:

WB, FC (Intra), ELISA

Species Specificity:

human, mouse

Positive Controls:

WB : A431 cells, NIH/3T3 cells

Background Information

HUWE1 encodes a HECT domain ubiquitin ligase which is a large protein (500 kDa) has attracted considerable interest because several and quite disparate substrates have been assigned to this E3. It has a role in regulating Berg-mann glia differentiation and this ubiquitin ligase orchestrates the programming of the neural progenitors that give rise to neurons and glia in the cerebellum. HUWE1 is essential for proliferation of a subset of tumor cells, and negative regulator of TP53 during the colorectal carcinoma progression through the ubiquitination pathway mediated by the HECT domain (PMID:15567145). HUWE1 plays a critical role in lung cancer and increased HUWE1 expression is significantly associated with worse prognosis which suggest that HUWE1 might be a potential target for lung cancer therapy (PMID: 30026863).

Storage

Storage:

Store at -20°C. Stable for one year after shipment.

Storage Buffer:

PBS with 0.02% sodium azide and 50% glycerol

Aliquoting is unnecessary for -20°C storage

*** 20ul sizes contain 0.1% BSA

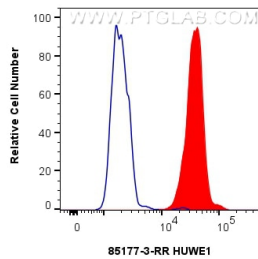
For technical support and original validation data for this product please contact:

T: 1 (888) 4PTGLAB (1-888-478-4522) (toll free in USA), or 1(312) 455-8498 (outside USA)

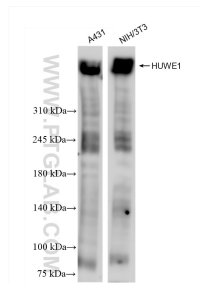
E: proteintech@ptglab.com
W: ptglab.com

This product is exclusively available under Proteintech Group brand and is not available to purchase from any other manufacturer.

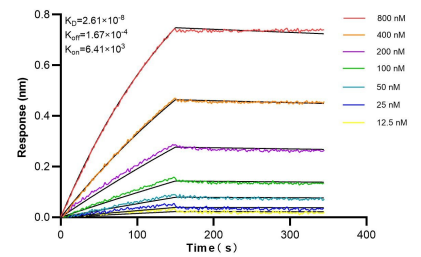
Selected Validation Data



1x10⁶ HeLa cells were intracellularly stained with 0.25 ug HUWE1 Recombinant antibody (85177-3-RR, Clone:242702F10) and CoraLite®488-Conjugated Goat Anti-Rabbit IgG(H+L) (SA00013-2)(red), or 0.25 ug Rabbit IgG Isotype Control RecAb (98136-1-RR, Clone: 240953C9) (blue). Cells were fixed with 4% PFA and permeabilized with Flow Cytometry Perm Buffer (PF00011-C).



Various lysates were subjected to SDS PAGE followed by western blot with 85177-3-RR (HUWE1 antibody) at dilution of 1:3000 incubated at room temperature for 1.5 hours.



Biolayer interferometry (BLI) kinetic assays of 85177-3-RR against Human HUWE1 were performed. The affinity constant is 26.1 nM.