

For Research Use Only

HUWE1 Recombinant antibody, PBS Only (Detector)

Catalog Number: 85177-3-PBS



Basic Information

Catalog Number: 85177-3-PBS	GenBank Accession Number: BC002602	Purification Method: Protein A purification
Size: 100ug , Concentration: 1 mg/ml by Nanodrop;	GeneID (NCBI): 10075	CloneNo.: 242702F10
Source: Rabbit	UNIPROT ID: Q7Z6Z7	
Isotype: IgG	Full Name: HECT, UBA and WWE domain containing 1	
Immunogen Catalog Number: AG13763	Calculated MW: 437 aa, 482 kDa	
	Observed MW: 482 kDa	

Applications

Tested Applications:
WB, FC (Intra), Cytometric bead array, Indirect ELISA

Species Specificity:
human, mouse

Product Information

85177-3-PBS targets HUWE1 as part of a matched antibody pair:

MP01895-2: 85177-1-PBS capture and 85177-3-PBS detection (validated in Cytometric bead array)

Unconjugated rabbit recombinant monoclonal antibody in PBS only (BSA and azide free) storage buffer at a concentration of 1 mg/mL, ready for conjugation. Created using Proteintech's proprietary in-house recombinant technology. Recombinant production enables unrivalled batch-to-batch consistency, easy scale-up, and future security of supply.

This conjugation ready format makes antibodies ideal for use in many applications including: ELISAs, multiplex assays requiring matched pairs, mass cytometry, and multiplex imaging applications. Antibody use should be optimized by the end user for each application and assay.

Background Information

HUWE1 encodes a HECT domain ubiquitin ligase which is a large protein (500 kDa) has attracted considerable interest because several and quite disparate substrates have been assigned to this E3. It has a role in regulating Bergmann glia differentiation and this ubiquitin ligase orchestrates the programming of the neural progenitors that give rise to neurons and glia in the cerebellum. HUWE1 is essential for proliferation of a subset of tumor cells, and negative regulator of TP53 during the colorectal carcinoma progression through the ubiquitination pathway mediated by the HECT domain (PMID:15567145). HUWE1 plays a critical role in lung cancer and increased HUWE1 expression is significantly associated with worse prognosis which suggest that HUWE1 might be a potential target for lung cancer therapy (PMID: 30026863).

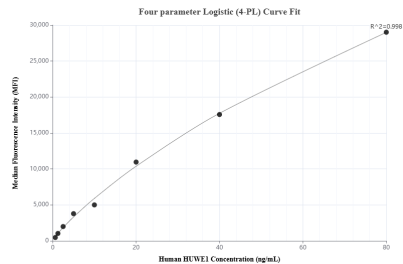
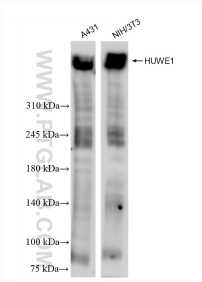
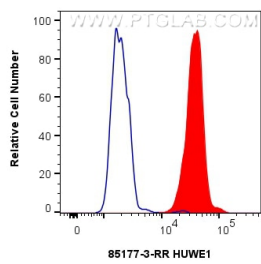
Storage

Storage:
Store at -80°C.
Storage Buffer:
PBS only

For technical support and original validation data for this product please contact:
T: 1 (888) 4PTGLAB (1-888-478-4522) (toll free in USA), or 1(312) 455-8498 (outside USA)
E: proteintech@ptglab.com
W: ptglab.com

This product is exclusively available under Proteintech Group brand and is not available to purchase from any other manufacturer.

Selected Validation Data

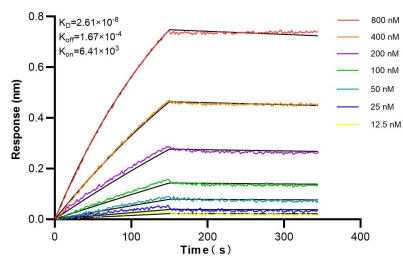


1x10⁶ HeLa cells were intracellularly stained with 0.25 ug HUWE1 Recombinant antibody (85177-3-RR, Clone:242702F10) and CoraLite®488-Conjugated Goat Anti-Rabbit IgG(H+L) (SA00013-2)(red), or 0.25 ug Rabbit IgG Isotype Control RecAb (98136-1-RR, Clone: 240953C9) (blue). Cells were fixed with 4% PFA and permeabilized with Flow Cytometry Perm Buffer (PF00011-C). This data was developed using the same antibody clone with 85177-3-PBS in a



Various lysates were subjected to SDS PAGE followed by western blot with 85177-3-RR (HUWE1 antibody) at dilution of 1:3000 incubated at room temperature for 1.5 hours. This data was developed using the same antibody clone with 85177-3-PBS in a different storage buffer formulation.

Cytometric bead array standard curve of MP01895-2, HUWE1 Recombinant Matched Antibody Pair, PBS Only. Capture antibody: 85177-1-PBS. Detection antibody: 85177-3-PBS. Standard: Ag13763. Range: 0.625-80 ng/mL.



Biolayer interferometry (BLI) kinetic assays of 85177-3-RR against Human HUWE1 were performed. The affinity constant is 26.1 nM.