

For Research Use Only

# NUP214 Recombinant antibody, PBS Only (Detector)

Catalog Number: 85161-5-PBS



## Basic Information

|  |  |   |
|--|--|---|
| <b>Catalog Number:</b><br>85161-5-PBS                      | <b>GenBank Accession Number:</b><br>BC105998 | <b>Purification Method:</b><br>Protein A purification |
| <b>Size:</b><br>100ug, Concentration: 1 mg/ml by Nanodrop; | <b>GeneID (NCBI):</b><br>8021                | <b>CloneNo.:</b><br>242782G10                         |
| <b>Source:</b><br>Rabbit                                   | <b>UNIPROT ID:</b><br>P35658                 |   |
| <b>Isotype:</b><br>IgG                                     | <b>Full Name:</b><br>nucleoporin 214kDa      |   |
| <b>Immunogen Catalog Number:</b><br>AG21377                | <b>Calculated MW:</b><br>2080 aa, 213 kDa    |   |

## Applications

**Tested Applications:**  
Sandwich ELISA, Indirect ELISA, Sample test

**Species Specificity:**  
human

## Product Information

85161-5-PBS targets NUP214 as part of a matched antibody pair:

MP01882-3: 85161-2-PBS capture and 85161-5-PBS detection (validated in Sandwich ELISA)

Unconjugated rabbit recombinant monoclonal antibody in PBS only (BSA and azide free) storage buffer at a concentration of 1 mg/mL, ready for conjugation. Created using Proteintech's proprietary in-house recombinant technology. Recombinant production enables unrivalled batch-to-batch consistency, easy scale-up, and future security of supply.

This conjugation ready format makes antibodies ideal for use in many applications including: ELISAs, multiplex assays requiring matched pairs, mass cytometry, and multiplex imaging applications. Antibody use should be optimized by the end user for each application and assay.

## Storage

**Storage:**  
Store at -80°C.  
**Storage Buffer:**  
PBS only, pH7.3

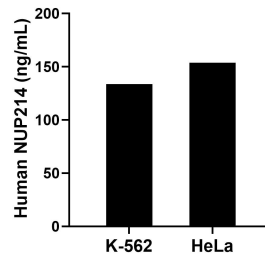
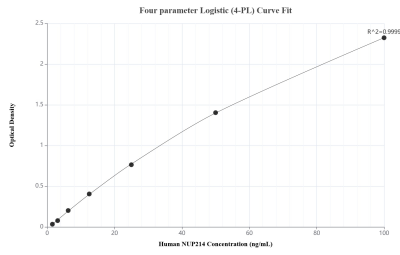
For technical support and original validation data for this product please contact:

T: 1 (888) 4PTGLAB (1-888-478-4522) (toll free in USA), or 1(312) 455-8498 (outside USA)

E: [proteintech@ptglab.com](mailto:proteintech@ptglab.com)  
W: [ptglab.com](http://ptglab.com)

**This product is exclusively available under Proteintech Group brand and is not available to purchase from any other manufacturer.**

## Selected Validation Data



Sandwich ELISA standard curve of MP01882-3, Human NUP214 Recombinant Matched Antibody Pair - PBS only. 85161-2-PBS was coated to a plate as the capture antibody and incubated with serial dilutions of standard Ag21377. 85161-5-PBS was HRP conjugated as the detection antibody. Range: 1.56-100 ng/mL

The mean NUP214 concentration was determined to be 133.70 ng/mL in K-562 cell extract based on a 2.50 mg/mL extract load and 153.72 ng/mL in HeLa cell extract based on a 1.50 mg/mL extract load.