

For Research Use Only

# NUP214 Recombinant antibody, PBS Only (Capture)

Catalog Number:85161-2-PBS



## Basic Information

<b>Catalog Number:</b> 85161-2-PBS	<b>GenBank Accession Number:</b> BC105998	<b>Purification Method:</b> Protein A purification
<b>Size:</b> 100ug , Concentration: 1 mg/ml by Nanodrop;	<b>GeneID (NCBI):</b> 8021	<b>CloneNo.:</b> 242782C7
<b>Source:</b> Rabbit	<b>UNIPROT ID:</b> P35658	
<b>Isotype:</b> IgG	<b>Full Name:</b> nucleoporin 214kDa	
<b>Immunogen Catalog Number:</b> AG21377	<b>Calculated MW:</b> 2080 aa, 213 kDa	

## Applications

**Tested Applications:**  
Cytometric bead array, Sandwich ELISA, Indirect ELISA, Sample test

**Species Specificity:**  
human

## Product Information

85161-2-PBS targets NUP214 as part of a matched antibody pair:

MP01882-1: 85161-2-PBS capture and 85161-1-PBS detection (validated in Cytometric bead array)

MP01882-2: 85161-2-PBS capture and 85161-3-PBS detection (validated in Cytometric bead array)

MP01882-3: 85161-2-PBS capture and 85161-5-PBS detection (validated in Sandwich ELISA)

Unconjugated rabbit recombinant monoclonal antibody in PBS only (BSA and azide free) storage buffer at a concentration of 1 mg/mL, ready for conjugation. Created using Proteintech's proprietary in-house recombinant technology. Recombinant production enables unrivalled batch-to-batch consistency, easy scale-up, and future security of supply.

This conjugation ready format makes antibodies ideal for use in many applications including: ELISAs, multiplex assays requiring matched pairs, mass cytometry, and multiplex imaging applications. Antibody use should be optimized by the end user for each application and assay.

## Storage

**Storage:**  
Store at -80°C.  
**Storage Buffer:**  
PBS only, pH7.3

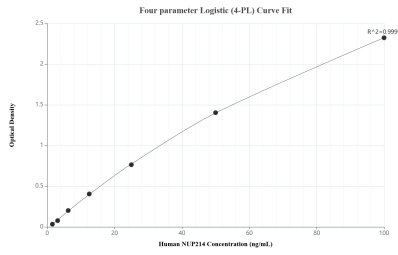
For technical support and original validation data for this product please contact:

T: 1 (888) 4PTGLAB (1-888-478-4522) (toll free in USA), or 1(312) 455-8498 (outside USA)

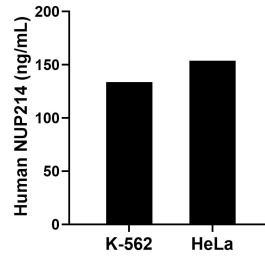
E: proteintech@ptglab.com  
W: ptglab.com

**This product is exclusively available under Proteintech Group brand and is not available to purchase from any other manufacturer.**

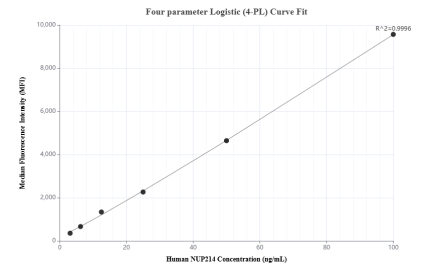
## Selected Validation Data



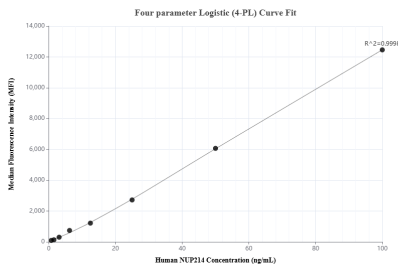
Sandwich ELISA standard curve of MP01882-3, Human NUP214 Recombinant Matched Antibody Pair - PBS only. 85161-2-PBS was coated to a plate as the capture antibody and incubated with serial dilutions of standard Ag21377. 85161-5-PBS was HRP conjugated as the detection antibody. Range: 1.56-100 ng/mL



The mean NUP214 concentration was determined to be 133.70 ng/mL in K-562 cell extract based on a 2.50 mg/mL extract load and 153.72 ng/mL in HeLa cell extract based on a 1.50 mg/mL extract load.



Cytometric bead array standard curve of MP01882-2, NUP214 Recombinant Matched Antibody Pair, PBS Only. Capture antibody: 85161-2-PBS. Detection antibody: 85161-3-PBS. Standard: Ag21377. Range: 3.125-100 ng/mL



Cytometric bead array standard curve of MP01882-1, NUP214 Recombinant Matched Antibody Pair, PBS Only. Capture antibody: 85161-2-PBS. Detection antibody: 85161-1-PBS. Standard: Ag21377. Range: 0.781-100 ng/mL