

For Research Use Only

# RFC1 Recombinant antibody

Catalog Number: 85148-1-RR



## Basic Information

<b>Catalog Number:</b> 85148-1-RR	<b>GenBank Accession Number:</b> BC051751	<b>Purification Method:</b> Protein A purification
<b>Size:</b> 100ul , Concentration: 1000 µg/ml by Nanodrop;	<b>GeneID (NCBI):</b> 5981	<b>CloneNo.:</b> 242818A5
<b>Source:</b> Rabbit	<b>UNIPROT ID:</b> P35251	<b>Recommended Dilutions:</b> WB 1:5000-1:50000
<b>Isotype:</b> IgG	<b>Full Name:</b> replication factor C (activator 1) 1, 145kDa	
<b>Immunogen Catalog Number:</b> AG13585	<b>Calculated MW:</b> 128 kDa	
	<b>Observed MW:</b> 128-150 kDa	

## Applications

<b>Tested Applications:</b> WB, ELISA	<b>Positive Controls:</b> WB : HeLa cells, HepG2 cells, HEK-293T cells, Jurkat cells, A431 cells
<b>Species Specificity:</b> human	

## Background Information

Replication factor C subunit 1 (RFC1) is a pentameric DNA polymerase accessory protein involved in DNA replication and repair (PMID: 10051561). It was reported as a cause of cerebellar ataxia with neuropathy and vestibular areflexia syndrome (CANVAS) (PMID: 30926972).

## Storage

**Storage:**  
Store at -20°C. Stable for one year after shipment.  
**Storage Buffer:**  
PBS with 0.02% sodium azide and 50% glycerol pH 7.3.  
Aliquoting is unnecessary for -20°C storage

\*\*\* 20ul sizes contain 0.1% BSA

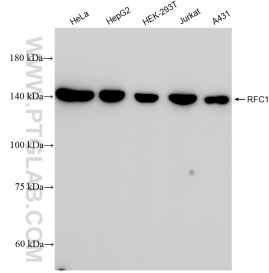
For technical support and original validation data for this product please contact:

T: 1 (888) 4PTGLAB (1-888-478-4522) (toll free in USA), or 1(312) 455-8498 (outside USA)

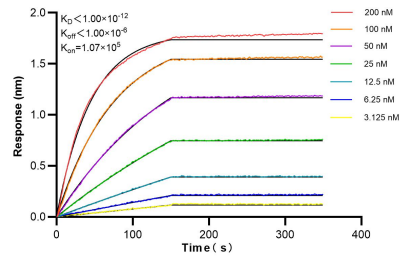
E: proteintech@ptglab.com  
W: ptglab.com

This product is exclusively available under Proteintech Group brand and is not available to purchase from any other manufacturer.

## Selected Validation Data



HeLa cells were subjected to SDS PAGE followed by western blot with 85148-1-RR (RFC1 antibody) at dilution of 1:10000 incubated at room temperature for 1.5 hours.



Biolayer interferometry (BLI) kinetic assays of 85148-1-RR against Human RFC1 were performed. The affinity constant is below 1 pM.