

For Research Use Only

# RFC1 Recombinant antibody, PBS Only (Capture)

Catalog Number: 85148-1-PBS



## Basic Information

<b>Catalog Number:</b> 85148-1-PBS	<b>GenBank Accession Number:</b> BC051751	<b>Purification Method:</b> Protein A purification
<b>Size:</b> 100ug, Concentration: 1 mg/ml by Nanodrop;	<b>GeneID (NCBI):</b> 5981	<b>CloneNo.:</b> 242818A5
<b>Source:</b> Rabbit	<b>UNIPROT ID:</b> P35251	
<b>Isotype:</b> IgG	<b>Full Name:</b> replication factor C (activator 1) 1, 145kDa	
<b>Immunogen Catalog Number:</b> AG13585	<b>Calculated MW:</b> 128 kDa	
	<b>Observed MW:</b> 128-150 kDa	

## Applications

**Tested Applications:**  
WB, Cytometric bead array, Indirect ELISA

**Species Specificity:**  
human

## Product Information

85148-1-PBS targets RFC1 as part of a matched antibody pair:

MP01865-1: 85148-1-PBS capture and 85148-2-PBS detection (validated in Cytometric bead array)

Unconjugated rabbit recombinant monoclonal antibody in PBS only (BSA and azide free) storage buffer at a concentration of 1 mg/mL, ready for conjugation. Created using Proteintech's proprietary in-house recombinant technology. Recombinant production enables unrivalled batch-to-batch consistency, easy scale-up, and future security of supply.

This conjugation ready format makes antibodies ideal for use in many applications including: ELISAs, multiplex assays requiring matched pairs, mass cytometry, and multiplex imaging applications. Antibody use should be optimized by the end user for each application and assay.

## Background Information

Replication factor C subunit 1 (RFC1) is a pentameric DNA polymerase accessory protein involved in DNA replication and repair (PMID: 10051561). It was reported as a cause of cerebellar ataxia with neuropathy and vestibular areflexia syndrome (CANVAS) (PMID: 30926972).

## Storage

**Storage:**  
Store at -80°C.

**Storage Buffer:**  
PBS Only

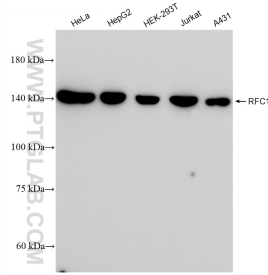
For technical support and original validation data for this product please contact:

T: 1 (888) 4PTGLAB (1-888-478-4522) (toll free in USA), or 1(312) 455-8498 (outside USA)

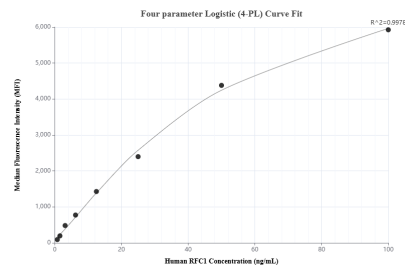
E: [proteintech@ptglab.com](mailto:proteintech@ptglab.com)  
W: [ptglab.com](http://ptglab.com)

**This product is exclusively available under Proteintech Group brand and is not available to purchase from any other manufacturer.**

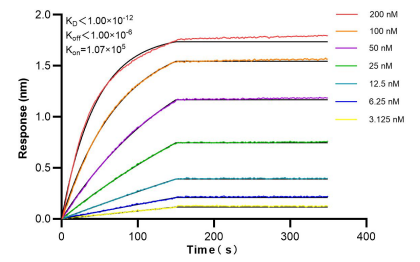
## Selected Validation Data



HeLa cells were subjected to SDS PAGE followed by western blot with 85148-1-RR (RFC1 antibody) at dilution of 1:10000 incubated at room temperature for 1.5 hours. This data was developed using the same antibody clone with 85148-1-PBS in a different storage buffer formulation.



Cytometric bead array standard curve of MP01865-1, RFC1 Recombinant Matched Antibody Pair, PBS Only. Capture antibody: 85148-1-PBS. Detection antibody: 85148-2-PBS. Standard: Ag13585. Range: 0.781-100 ng/mL



Bi-layer interferometry (BLI) kinetic assays of 85148-1-RR against Human RFC1 were performed. The affinity constant is below 1 pM.