

For Research Use Only

GBE1 Recombinant antibody, PBS Only (Capture)

Catalog Number: 85143-6-PBS



Basic Information

Catalog Number: 85143-6-PBS	GenBank Accession Number: BC012098	Purification Method: Protein A purification
Size: 100ug , Concentration: 1 mg/ml by Nanodrop;	GeneID (NCBI): 2632	CloneNo.: 242705E6
Source: Rabbit	UNIPROT ID: Q04446	
Isotype: IgG	Full Name: glucan (1,4-alpha-), branching enzyme 1	
Immunogen Catalog Number: AG14154	Calculated MW: 702 aa, 80 kDa	

Applications

Tested Applications:
Sandwich ELISA, Indirect ELISA, Sample test

Species Specificity:
human

Product Information

85143-6-PBS targets GBE1 as part of a matched antibody pair:

MP01824-3: 85143-6-PBS capture and 85143-3-PBS detection (validated in Sandwich ELISA)

Unconjugated rabbit recombinant monoclonal antibody in PBS only (BSA and azide free) storage buffer at a concentration of 1 mg/mL, ready for conjugation. Created using Proteintech's proprietary in-house recombinant technology. Recombinant production enables unrivalled batch-to-batch consistency, easy scale-up, and future security of supply.

This conjugation ready format makes antibodies ideal for use in many applications including: ELISAs, multiplex assays requiring matched pairs, mass cytometry, and multiplex imaging applications. Antibody use should be optimized by the end user for each application and assay.

Storage

Storage:
Store at -80°C.

Storage Buffer:
PBS Only

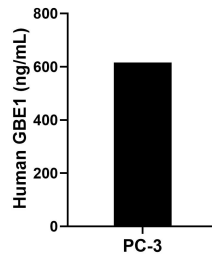
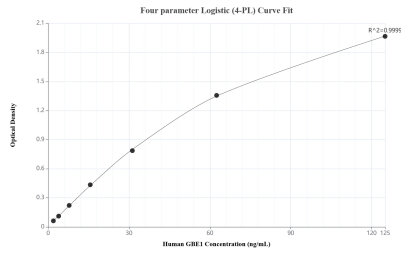
For technical support and original validation data for this product please contact:

T: 1 (888) 4PTGLAB (1-888-478-4522) (toll free
in USA), or 1(312) 455-8498 (outside USA)

E: proteintech@ptglab.com
W: ptglab.com

This product is exclusively available under Proteintech Group brand and is not available to purchase from any other manufacturer.

Selected Validation Data



Sandwich ELISA standard curve of MP01824-3, Human GBE1 Recombinant Matched Antibody Pair - PBS only. 85143-6-PBS was coated to a plate as the capture antibody and incubated with serial dilutions of standard Ag14154. 85143-3-PBS was HRP conjugated as the detection antibody. Range: 1.96-125 ng/mL

The mean GBE1 concentration was determined to be 615.46 ng/mL in PC-3 cell extract based on a 2.50 mg/mL extract load.