

For Research Use Only

TINAGL1 Recombinant antibody, PBS Only (Detector)

Catalog Number: 85140-2-PBS



Basic Information

Catalog Number: 85140-2-PBS	GenBank Accession Number: BC009048	Purification Method: Protein A purification
Size: 100ug , Concentration: 1 mg/ml by Nanodrop;	GeneID (NCBI): 64129	CloneNo.: 242813F10
Source: Rabbit	UNIPROT ID: Q9GZM7	
Isotype: IgG	Full Name: tubulointerstitial nephritis antigen-like 1	
Immunogen Catalog Number: AG2721	Calculated MW: 467 aa, 52 kDa	
	Observed MW: 52 kDa	

Applications

Tested Applications:
WB, Cytometric bead array, Indirect ELISA

Species Specificity:
human

Product Information

85140-2-PBS targets TINAGL1 as part of a matched antibody pair:

MP01822-1: 85140-1-PBS capture and 85140-2-PBS detection (validated in Cytometric bead array)

Unconjugated rabbit recombinant monoclonal antibody in PBS only (BSA and azide free) storage buffer at a concentration of 1 mg/mL, ready for conjugation. Created using Proteintech's proprietary in-house recombinant technology. Recombinant production enables unrivalled batch-to-batch consistency, easy scale-up, and future security of supply.

This conjugation ready format makes antibodies ideal for use in many applications including: ELISAs, multiplex assays requiring matched pairs, mass cytometry, and multiplex imaging applications. Antibody use should be optimized by the end user for each application and assay.

Background Information

Tubulointerstitial nephritis antigen-like 1 (Tinagl1), a secreted extracellular protein, was initially identified as a putative component of the ECM. Tinagl1 is most commonly associated with embryonic development, including the heart and adrenal glands. Low levels of Tinagl1 expression can be dire for craniofacial development and for female fertility.

Storage

Storage:
Store at -80°C.

Storage Buffer:
PBS Only

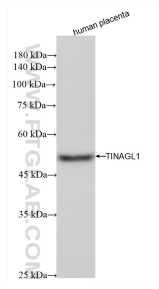
For technical support and original validation data for this product please contact:

T: 1 (888) 4PTGLAB (1-888-478-4522) (toll free in USA), or 1(312) 455-8498 (outside USA)

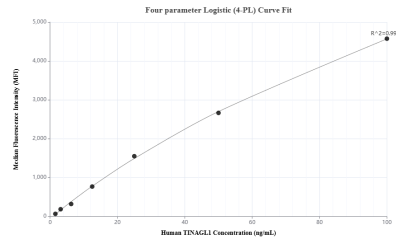
E: proteintech@ptglab.com
W: ptglab.com

This product is exclusively available under Proteintech Group brand and is not available to purchase from any other manufacturer.

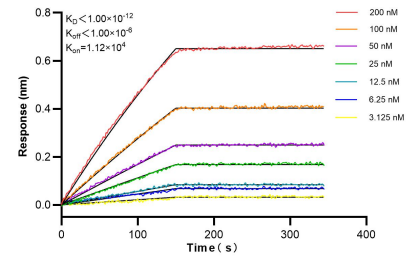
Selected Validation Data



Various lysates were subjected to SDS PAGE followed by western blot with 85140-2-RR (TINAGL1 antibody) at dilution of 1:2000 incubated at room temperature for 1.5 hours. This data was developed using the same antibody clone with 85140-2-PBS in a different storage buffer formulation.



Cytometric bead array standard curve of MP01822-1, TINAGL1 Recombinant Matched Antibody Pair, PBS Only. Capture antibody: 85140-1-PBS. Detection antibody: 85140-2-PBS. Standard: Ag2721. Range: 1.563-100 ng/mL.



Bi-layer interferometry (BLI) kinetic assays of 85140-2-RR against Human TINAGL1 were performed. The affinity constant is below 1 pM.