

For Research Use Only

Complement factor H Recombinant antibody, PBS Only (Capture)

Catalog Number: 85132-2-PBS



Basic Information

Catalog Number: 85132-2-PBS	GenBank Accession Number: GeneID (NCBI): 3075	Purification Method: Protein A purification
Size: 100ug , Concentration: 1 mg/ml by Nanodrop;	UNIPROT ID: P08603-1	CloneNo.: 242740E8
Source: Rabbit	Full Name: complement factor H	
Isotype: IgG	Calculated MW: 139kDa	
	Observed MW: 140-150 kDa	

Applications

Tested Applications:
WB, Cytometric bead array, Indirect ELISA

Species Specificity:
human

Product Information

85132-2-PBS targets Complement factor H as part of a matched antibody pair:

MP01827-1: 85132-2-PBS capture and 85132-3-PBS detection (validated in Cytometric bead array)

Unconjugated rabbit recombinant monoclonal antibody in PBS only (BSA and azide free) storage buffer at a concentration of 1 mg/mL, ready for conjugation. Created using Proteintech's proprietary in-house recombinant technology. Recombinant production enables unrivalled batch-to-batch consistency, easy scale-up, and future security of supply.

This conjugation ready format makes antibodies ideal for use in many applications including: ELISAs, multiplex assays requiring matched pairs, mass cytometry, and multiplex imaging applications. Antibody use should be optimized by the end user for each application and assay.

Background Information

Complement factor H (CFH) is an abundant plasma glycoprotein that regulates the function of the alternative complement pathway in the fluid phase and on cellular surfaces (PMID: 2963625). Factor H binds to C3b, accelerates the decay of the alternative pathway C3-convertase (C3bBb), and acts as a cofactor for the factor I-mediated proteolytic inactivation of C3b (PMID: 15163532). It plays a critical role in the homeostasis of the complement system in plasma and in the protection of bystander host cells and tissues from damage by complement activation. Abnormalities in factor H have been associated with renal disease (PMID: 18190458).

Storage

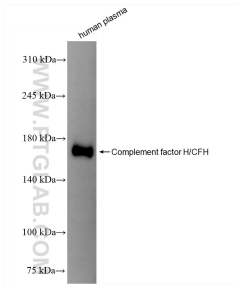
Storage:
Store at -80°C.

Storage Buffer:
PBS Only

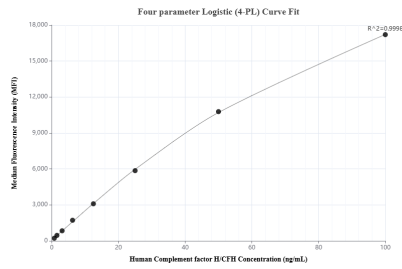
For technical support and original validation data for this product please contact:
T: 1 (888) 4PTGLAB (1-888-478-4522) (toll free in USA), or 1(312) 455-8498 (outside USA)
E: proteintech@ptglab.com
W: ptglab.com

This product is exclusively available under Proteintech Group brand and is not available to purchase from any other manufacturer.

Selected Validation Data



human plasma were subjected to SDS PAGE followed by western blot with 85132-2-RR (Complement factor H/CFH antibody) at dilution of 1:10000 incubated at room temperature for 1.5 hours. This data was developed using the same antibody clone with 85132-2-PBS in a different storage buffer formulation.



Cytometric bead array standard curve of MP01827-1, Complement factor H/CFH Recombinant Matched Antibody Pair, PBS Only. Capture antibody: 85132-2-PBS. Detection antibody: 85132-3-PBS. Standard: Eg3753. Range: 0.781-100 ng/mL.