

For Research Use Only

ASCC3 Recombinant antibody, PBS Only (Detector)

Catalog Number: 85130-2-PBS



Basic Information

Catalog Number: 85130-2-PBS	GenBank Accession Number: BC050681	Purification Method: Protein A purification
Size: 100ug, Concentration: 1 mg/ml by Nanodrop;	GeneID (NCBI): 10973	CloneNo.: 242755B4
Source: Rabbit	UNIPROT ID: Q8N3C0	
Isotype: IgG	Full Name: activating signal cointegrator 1 complex subunit 3	
Immunogen Catalog Number: AG11848	Calculated MW: 111 aa, 13 kDa, 251 kDa	
	Observed MW: 245 kDa	

Applications

Tested Applications:
WB, IF/ICC, Cytometric bead array, Indirect ELISA

Species Specificity:
human, mouse

Product Information

85130-2-PBS targets ASCC3 as part of a matched antibody pair.

MP01828-1: 85130-1-PBS capture and 85130-2-PBS detection (validated in Cytometric bead array)

Unconjugated rabbit recombinant monoclonal antibody in PBS only (BSA and azide free) storage buffer at a concentration of 1 mg/mL, ready for conjugation. Created using Proteintech's proprietary in-house recombinant technology. Recombinant production enables unrivalled batch-to-batch consistency, easy scale-up, and future security of supply.

This conjugation ready format makes antibodies ideal for use in many applications including: ELISAs, multiplex assays requiring matched pairs, mass cytometry, and multiplex imaging applications. Antibody use should be optimized by the end user for each application and assay.

Background Information

ASCC3 (Activating Signal Cointegrator 1 Complex Subunit 3) is a multifunctional protein involved in various cellular processes, including transcriptional regulation, DNA repair, and ribosome quality control. It is a member of the ASCC (Activating Signal Cointegrator 1 Complex) family, which functions as a bridge between co-repressors and co-activators in transcriptional regulation.

Storage

Storage:
Store at -80°C.

Storage Buffer:
PBS only

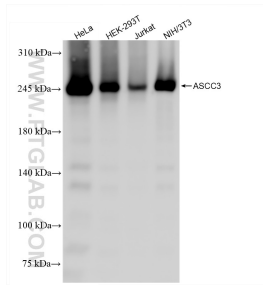
For technical support and original validation data for this product please contact:

T: 1 (888) 4PTGLAB (1-888-478-4522) (toll free
in USA), or 1(312) 455-8498 (outside USA)

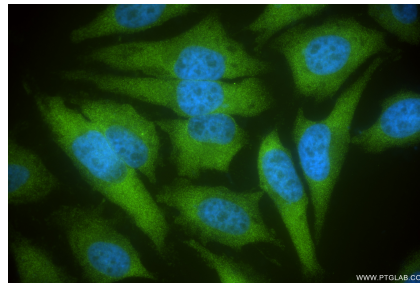
E: proteintech@ptglab.com
W: ptglab.com

This product is exclusively available under Proteintech Group brand and is not available to purchase from any other manufacturer.

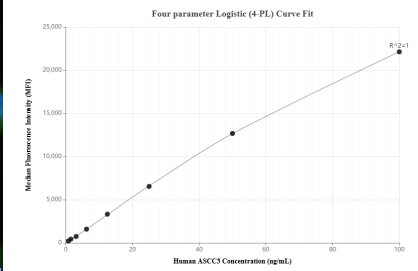
Selected Validation Data



Various lysates were subjected to SDS PAGE followed by western blot with 85130-2-RR (ASCC3 antibody) at dilution of 1:10000 incubated at room temperature for 1.5 hours. This data was developed using the same antibody clone with 85130-2-PBS in a different storage buffer formulation.



Immunofluorescent analysis of (4% PFA) fixed HeLa cells using ASCC3 antibody (85130-2-RR, Clone: 242755B4) at dilution of 1:200 and CoraLite® 488-Conjugated Goat Anti-Rabbit IgG(H+L) (SA00013-2). This data was developed using the same antibody clone with 85130-2-PBS in a different storage buffer formulation.



Cytometric bead array standard curve of MP01828-1, ASCC3 Recombinant Matched Antibody Pair, PBS Only. Capture antibody: 85130-1-PBS. Detection antibody: 85130-2-PBS. Standard: Ag11848. Range: 0.781-100 ng/mL.