

For Research Use Only

TCL1A Recombinant antibody

Catalog Number: 85129-5-RR



Basic Information

Catalog Number: 85129-5-RR	GenBank Accession Number: BC005831	Purification Method: Protein A purification
Size: 100ul , Concentration: 1000 ug/ml by Nanodrop;	GeneID (NCBI): 8115	CloneNo.: 242623A9
Source: Rabbit	UNIPROT ID: P56279	Recommended Dilutions: WB 1:2000-1:10000 IF/ICC 1:50-1:500
Isotype: IgG	Full Name: T-cell leukemia/lymphoma 1A	
Immunogen Catalog Number: AG0786	Calculated MW: 13 kDa	
	Observed MW: 15 kDa	

Applications

Tested Applications: WB, IF/ICC, ELISA	Positive Controls:
Species Specificity: human	WB : Ramos cells, IF/ICC : Ramos cells,

Background Information

TCL1A, also named as TCL1 and p14 TCL1, enhances cell proliferation, stabilizes mitochondrial membrane potential and promotes cell survival. TCL1A immunodetection is an independent marker of adverse outcome that could be used in routine settings for the management of DLCL patients. TCL1A expression is correlated with shorter time to treatment in chronic lymphocytic leukemia cases and shorter lymphoma-specific survival in mantle cell lymphoma series. It is a potential therapeutic target.

Storage

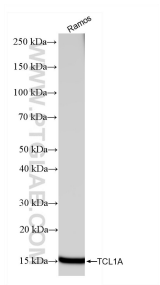
Storage:
Store at -20°C. Stable for one year after shipment.
Storage Buffer:
PBS with 0.02% sodium azide and 50% glycerol pH 7.3.
Aliquoting is unnecessary for -20°C storage

*** 20ul sizes contain 0.1% BSA

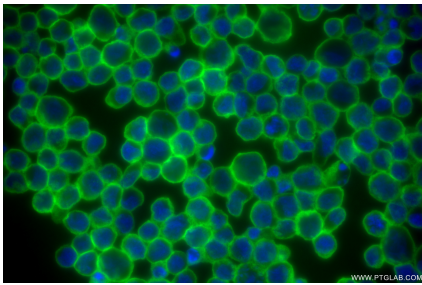
For technical support and original validation data for this product please contact:
T: 1 (888) 4PTGLAB (1-888-478-4522) (toll free in USA), or 1(312) 455-8498 (outside USA)
E: proteintech@ptglab.com
W: ptglab.com

This product is exclusively available under Proteintech Group brand and is not available to purchase from any other manufacturer.

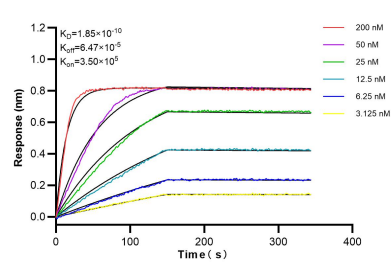
Selected Validation Data



Ramos cells were subjected to SDS PAGE followed by western blot with 85129-5-RR (TCL1A antibody) at dilution of 1:5000 incubated at room temperature for 1.5 hours.



Immunofluorescent analysis of (4% PFA) fixed Ramos cells using TCL1A antibody (85129-5-RR, Clone: 242623A9) at dilution of 1:200 and CoraLite® 488-Conjugated Goat Anti-Rabbit IgG(H+L) (SA00013-2).



Bilayer interferometry (BLI) kinetic assays of 85129-5-RR against Human TCL1A were performed. The affinity constant is 0.185 nM.