

For Research Use Only

SEC13 Recombinant antibody

Catalog Number: 85110-4-RR



Basic Information

Catalog Number: 85110-4-RR	GenBank Accession Number: BC002634	Purification Method: Protein A purification
Size: 100ul , Concentration: 1000 µg/ml by Nanodrop;	GeneID (NCBI): 6396	CloneNo.: 242775C3
Source: Rabbit	UNIPROT ID: P55735	Recommended Dilutions: WB 1:5000-1:50000 IF/ICC 1:200-1:800
Isotype: IgG	Full Name: SEC13 homolog (S. cerevisiae)	
Immunogen Catalog Number: AG7610	Calculated MW: 36 kDa	
	Observed MW: 36 kDa	

Applications

Tested Applications: WB, IF/ICC, ELISA	Positive Controls:
Species Specificity: human, mouse, rat	WB : LNCaP cells, HEK-293 cells, HepG2 cells, A431 cells, RAW 264.7 cells, mouse pancreas tissue, rat pancreas tissue
	IF/ICC : HepG2 cells,

Background Information

SEC13 is a component of the nuclear pore complex (NPC) and the COPII coat. It is required for vesicle biogenesis from endoplasmic reticulum during the transport of proteins. Shuttling of SEC13 between the nucleus and the cytoplasm may couple and regulate functions between these two compartments. (PMID: 14517296; 16407955)

Storage

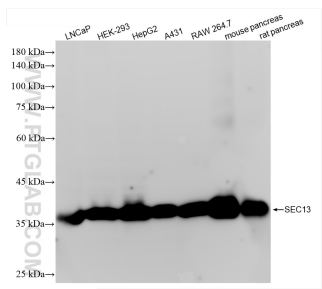
Storage:
Store at -20°C. Stable for one year after shipment.
Storage Buffer:
PBS with 0.02% sodium azide and 50% glycerol pH 7.3.
Aliquoting is unnecessary for -20°C storage

*** 20ul sizes contain 0.1% BSA

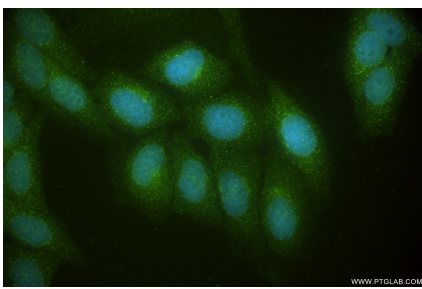
For technical support and original validation data for this product please contact:
T: 1 (888) 4PTGLAB (1-888-478-4522) (toll free in USA), or 1(312) 455-8498 (outside USA)
E: proteintech@ptglab.com
W: ptglab.com

This product is exclusively available under Proteintech Group brand and is not available to purchase from any other manufacturer.

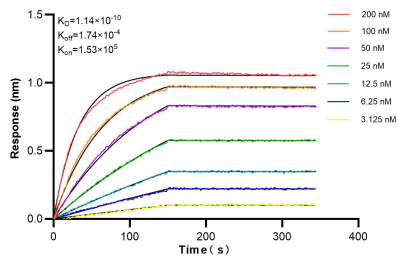
Selected Validation Data



Various lysates were subjected to SDS PAGE followed by western blot with 85110-4-RR (SEC13 antibody) at dilution of 1:10000 incubated at room temperature for 1.5 hours.



Immunofluorescent analysis of (-20°C Ethanol) fixed HepG2 cells using SEC13 antibody (85110-4-RR, Clone: 242775C3) at dilution of 1:400 and CoraLite® 488-Conjugated Goat Anti-Rabbit IgG(H+L) (SA00013-2).



Biolayer interferometry (BLI) kinetic assays of 85110-4-RR against Human SEC13 were performed. The affinity constant is 0.114 nM.