

For Research Use Only

# SEC13 Recombinant antibody, PBS Only

Catalog Number:85110-4-PBS



## Basic Information

<b>Catalog Number:</b> 85110-4-PBS	<b>GenBank Accession Number:</b> BC002634	<b>Purification Method:</b> Protein A purification
<b>Size:</b> 100ug , Concentration: 1 mg/ml by Nanodrop;	<b>GeneID (NCBI):</b> 6396	<b>CloneNo.:</b> 242775C3
<b>Source:</b> Rabbit	<b>UNIPROT ID:</b> P55735	
<b>Isotype:</b> IgG	<b>Full Name:</b> SEC13 homolog (S. cerevisiae)	
<b>Immunogen Catalog Number:</b> AG7610	<b>Calculated MW:</b> 36 kDa	
	<b>Observed MW:</b> 36 kDa	

## Applications

**Tested Applications:**  
WB, IF/ICC, Indirect ELISA

**Species Specificity:**  
human, mouse, rat

## Background Information

SEC13 is a component of the nuclear pore complex (NPC) and the COPII coat. It is required for vesicle biogenesis from endoplasmic reticulum during the transport of proteins. Shuttling of SEC13 between the nucleus and the cytoplasm may couple and regulate functions between these two compartments. (PMID: 14517296; 16407955)

## Storage

**Storage:**  
Store at -80°C.

**Storage Buffer:**  
PBS Only

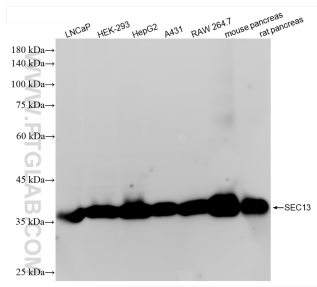
For technical support and original validation data for this product please contact:

T: 1 (888) 4PTGLAB (1-888-478-4522) (toll free in USA), or 1(312) 455-8498 (outside USA)

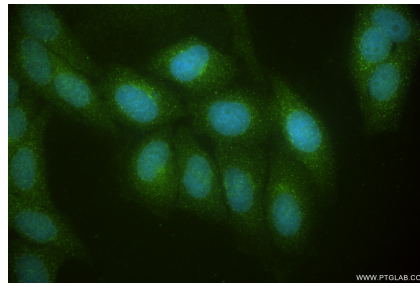
E: [proteintech@ptglab.com](mailto:proteintech@ptglab.com)  
W: [ptglab.com](http://ptglab.com)

**This product is exclusively available under Proteintech Group brand and is not available to purchase from any other manufacturer.**

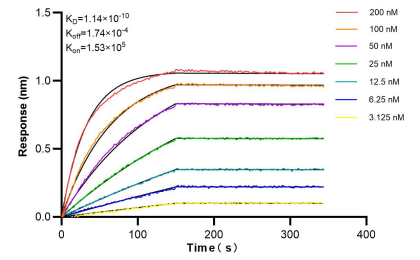
## Selected Validation Data



Various lysates were subjected to SDS PAGE followed by western blot with 85110-4-RR (SEC13 antibody) at dilution of 1:10000 incubated at room temperature for 1.5 hours. This data was developed using the same antibody clone with 85110-4-PBS in a different storage buffer formulation.



Immunofluorescent analysis of (-20°C Ethanol) fixed HepG2 cells using SEC13 antibody (85110-4-RR, Clone: 242775C3) at dilution of 1:400 and CoraLite® 488-Conjugated Goat Anti-Rabbit IgG(H+L) (SA00013-2). This data was developed using the same antibody clone with 85110-4-PBS in a different storage buffer formulation.



Biacore interferometry (BLI) kinetic assays of 85110-4-RR against Human SEC13 were performed. The affinity constant is 0.114 nM.