

For Research Use Only

# MRPL11 Recombinant antibody, PBS Only

Catalog Number:85109-4-PBS



## Basic Information

<b>Catalog Number:</b> 85109-4-PBS	<b>GenBank Accession Number:</b> BC005002	<b>Purification Method:</b> Protein A purification
<b>Size:</b> 100ug , Concentration: 1 mg/ml by Nanodrop;	<b>GeneID (NCBI):</b> 65003	<b>CloneNo.:</b> 242768G1
<b>Source:</b> Rabbit	<b>UNIPROT ID:</b> Q9Y3B7	
<b>Isotype:</b> IgG	<b>Full Name:</b> mitochondrial ribosomal protein L11	
<b>Immunogen Catalog Number:</b> AG7899	<b>Calculated MW:</b> 21 kDa	

## Applications

**Tested Applications:**  
IF/ICC, Indirect ELISA

**Species Specificity:**  
human

## Storage

**Storage:**  
Store at -80°C.  
**Storage Buffer:**  
PBS Only

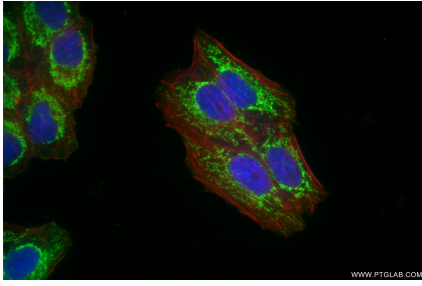
For technical support and original validation data for this product please contact:

T: 1 (888) 4PTGLAB (1-888-478-4522) (toll free in USA), or 1(312) 455-8498 (outside USA)

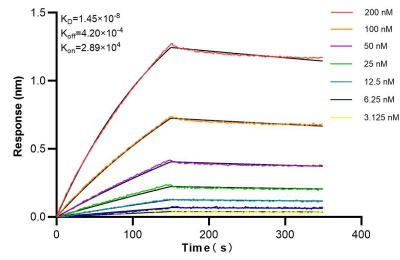
E: [proteintech@ptglab.com](mailto:proteintech@ptglab.com)  
W: [ptglab.com](http://ptglab.com)

This product is exclusively available under Proteintech Group brand and is not available to purchase from any other manufacturer.

## Selected Validation Data



Immunofluorescent analysis of (4% PFA) fixed HepG2 cells using MRPL11 antibody (85109-4-RR, Clone: 242768G1 ) at dilution of 1:1000 and CoraLite®488-Conjugated Goat Anti-Rabbit IgG(H+L) (SA00013-2), CL594-Phalloidin (red). This data was developed using the same antibody clone with 85109-4-PBS in a different storage buffer formulation.



Biolayer interferometry (BLI) kinetic assays of 85109-4-RR against Human MRPL11 were performed. The affinity constant is 14.5 nM.