

For Research Use Only

GDF-15 Recombinant antibody

Catalog Number: 85100-1-RR



Basic Information

Catalog Number: 85100-1-RR	GenBank Accession Number: BC008962	Purification Method: Protein A purification
Size: 100ul , Concentration: 1000 ug/ml by Nanodrop;	GeneID (NCBI): 9518	CloneNo.: 242173B11
Source: Rabbit	UNIPROT ID: Q99988	Recommended Dilutions: WB 1:5000-1:50000 IHC 1:500-1:2000
Isotype: IgG	Full Name: growth differentiation factor 15	
Immunogen Catalog Number: AG26790	Calculated MW: 34 kDa	
	Observed MW: 34 kDa	

Applications

Tested Applications:
WB, IHC, ELISA

Species Specificity:
human

Note-IHC: suggested antigen retrieval with TE buffer pH 9.0; (*) Alternatively, antigen retrieval may be performed with citrate buffer pH 6.0

Positive Controls:

WB : HT-1080 cells, A549 cells, HepG2 cells, human placenta tissue

IHC : human placenta tissue,

Background Information

associated with hypoxia, inflammation and oxidative stress, it is also released from endothelial cells after stimulation with pro-inflammatory cytokines. GDF 15 has been suggested as a target and biomarker for cardiovascular disease as it plays a cardioprotective role in the adult heart. GDF 15 is highly expressed in the placenta. GDF 15 is known to be involved in human embryo development and necessary for the maintenance of pregnancy. GDF 15 is also produced by adipocytes in response to oxidative stress, a well-known factor associated with preeclampsia.

Storage

Storage:

Store at -20°C. Stable for one year after shipment.

Storage Buffer:

PBS with 0.02% sodium azide and 50% glycerol pH 7.3.

Aliquoting is unnecessary for -20°C storage

***** 20ul sizes contain 0.1% BSA**

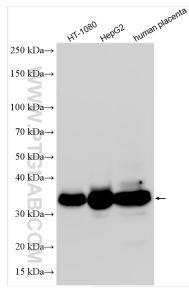
For technical support and original validation data for this product please contact:

T: 1 (888) 4PTGLAB (1-888-478-4522) (toll free in USA), or 1(312) 455-8498 (outside USA)

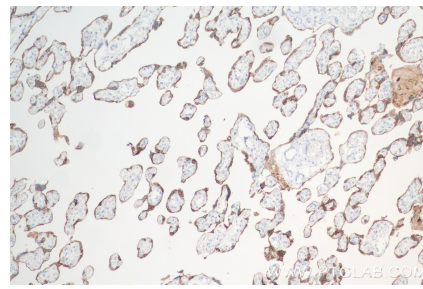
E: proteintech@ptglab.com
W: ptglab.com

This product is exclusively available under Proteintech Group brand and is not available to purchase from any other manufacturer.

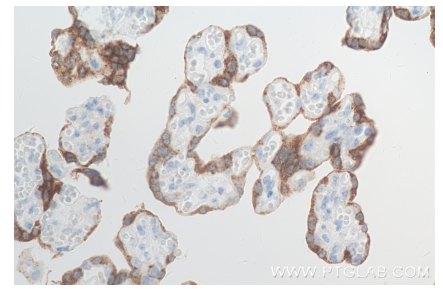
Selected Validation Data



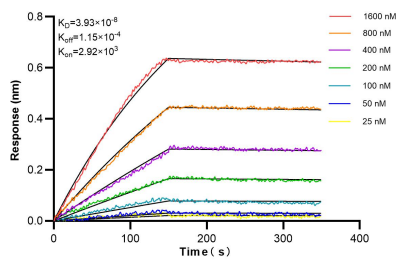
Various lysates were subjected to SDS PAGE followed by western blot with 85100-1-RR (GDF-15 antibody) at dilution of 1:10000 incubated at room temperature for 1.5 hours.



Immunohistochemical analysis of paraffin-embedded human placenta tissue slide using 85100-1-RR (GDF-15 antibody) at dilution of 1:1000 (under 10x lens). Heat mediated antigen retrieval with Tris-EDTA buffer (pH 9.0).



Immunohistochemical analysis of paraffin-embedded human placenta tissue slide using 85100-1-RR (GDF-15 antibody) at dilution of 1:1000 (under 40x lens). Heat mediated antigen retrieval with Tris-EDTA buffer (pH 9.0).



Biolayer interferometry (BLI) kinetic assays of 85100-1-RR against Human GDF-15 were performed. The affinity constant is 39.3 nM.