

For Research Use Only

# GDF-15 Recombinant antibody, PBS Only

Catalog Number: 85100-1-PBS



## Basic Information

<b>Catalog Number:</b> 85100-1-PBS	<b>GenBank Accession Number:</b> BC008962	<b>Purification Method:</b> Protein A purification
<b>Size:</b> 100ug, Concentration: 1 mg/ml by Nanodrop;	<b>GeneID (NCBI):</b> 9518	<b>CloneNo.:</b> 242173B11
<b>Source:</b> Rabbit	<b>UNIPROT ID:</b> Q99988	
<b>Isotype:</b> IgG	<b>Full Name:</b> growth differentiation factor 15	
<b>Immunogen Catalog Number:</b> AG26790	<b>Calculated MW:</b> 34 kDa	
	<b>Observed MW:</b> 34 kDa	

## Applications

**Tested Applications:**  
WB, IHC, Indirect ELISA

**Species Specificity:**  
human

## Background Information

associated with hypoxia, inflammation and oxidative stress, it is also released from endothelial cells after stimulation with pro-inflammatory cytokines. GDF 15 has been suggested as a target and biomarker for cardiovascular disease as it plays a cardioprotective role in the adult heart. GDF 15 is highly expressed in the placenta. GDF 15 is known to be involved in human embryo development and necessary for the maintenance of pregnancy. GDF 15 is also produced by adipocytes in response to oxidative stress, a well-known factor associated with preeclampsia.

## Storage

**Storage:**  
Store at -80°C.

**Storage Buffer:**  
PBS Only

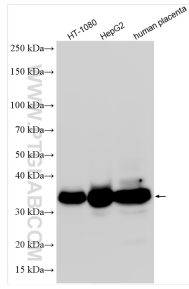
For technical support and original validation data for this product please contact:

T: 1 (888) 4PTGLAB (1-888-478-4522) (toll free in USA), or 1(312) 455-8498 (outside USA)

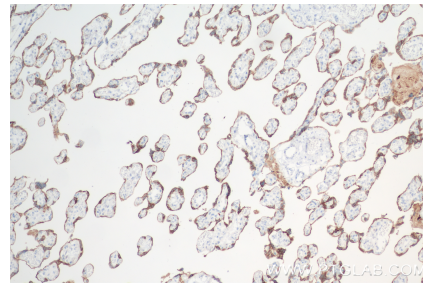
E: [proteintech@ptglab.com](mailto:proteintech@ptglab.com)  
W: [ptglab.com](http://ptglab.com)

**This product is exclusively available under Proteintech Group brand and is not available to purchase from any other manufacturer.**

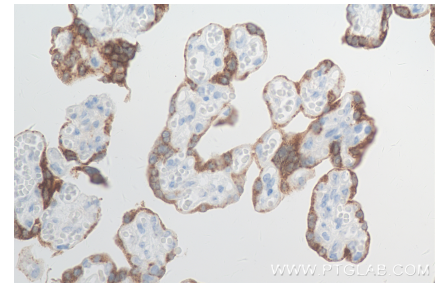
## Selected Validation Data



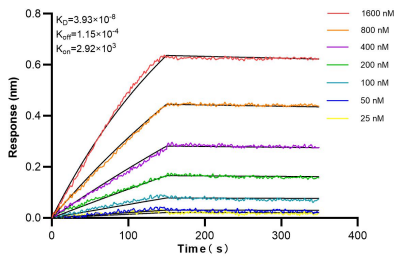
Various lysates were subjected to SDS PAGE followed by western blot with 85100-1-RR (GDF-15 antibody) at dilution of 1:10000 incubated at room temperature for 1.5 hours. This data was developed using the same antibody clone with 85100-1-PBS in a different storage buffer formulation.



Immunohistochemical analysis of paraffin-embedded human placenta tissue slide using 85100-1-RR (GDF-15 antibody) at dilution of 1:1000 (under 10x lens). Heat mediated antigen retrieval with Tris-EDTA buffer (pH 9.0). This data was developed using the same antibody clone with 85100-1-PBS in a different storage buffer formulation.



Immunohistochemical analysis of paraffin-embedded human placenta tissue slide using 85100-1-RR (GDF-15 antibody) at dilution of 1:1000 (under 40x lens). Heat mediated antigen retrieval with Tris-EDTA buffer (pH 9.0). This data was developed using the same antibody clone with 85100-1-PBS in a different storage buffer formulation.



Biolayer interferometry (BLI) kinetic assays of 85100-1-RR against Human GDF-15 were performed. The affinity constant is 39.3 nM.