

For Research Use Only

NME2 Recombinant antibody, PBS Only (Detector)

Catalog Number: 85074-2-PBS



Basic Information

Catalog Number: 85074-2-PBS	GenBank Accession Number: BC002476	Purification Method: Protein A purification
Size: 100ug , Concentration: 1 mg/ml by Nanodrop;	GeneID (NCBI): 4831	CloneNo.: 242698C7
Source: Rabbit	UNIPROT ID: P22392	
Isotype: IgG	Full Name: non-metastatic cells 2, protein (NM23B) expressed in	
Immunogen Catalog Number: AG13913	Calculated MW: 152 aa, 17 kDa	
	Observed MW: 17 kDa	

Applications

Tested Applications:
WB, FC (Intra), Cytometric bead array, Indirect ELISA

Species Specificity:
human, mouse

Product Information

85074-2-PBS targets NME2 as part of a matched antibody pair:

MP01804-1: 85074-3-PBS capture and 85074-2-PBS detection (validated in Cytometric bead array)

Unconjugated rabbit recombinant monoclonal antibody in PBS only (BSA and azide free) storage buffer at a concentration of 1 mg/mL, ready for conjugation. Created using Proteintech's proprietary in-house recombinant technology. Recombinant production enables unrivalled batch-to-batch consistency, easy scale-up, and future security of supply.

This conjugation ready format makes antibodies ideal for use in many applications including: ELISAs, multiplex assays requiring matched pairs, mass cytometry, and multiplex imaging applications. Antibody use should be optimized by the end user for each application and assay.

Background Information

NME2(non-metastatic cells 2, protein) is also named as NDKB(Nucleoside diphosphate kinase B), NM23B and belongs to the NDK family. It is involved in the phosphorylation of nucleoside diphosphates and interacts with membrane receptor and constituting a novel molecular regulatory mechanism of GPCR endocytosis. This protein has 2 isoforms produced by alternative splicing.

Storage

Storage:
Store at -80°C.

Storage Buffer:
PBS Only

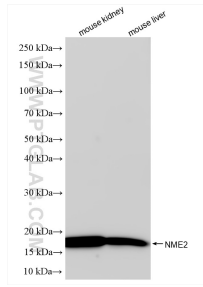
For technical support and original validation data for this product please contact:

T: 1 (888) 4PTGLAB (1-888-478-4522) (toll free in USA), or 1(312) 455-8498 (outside USA)

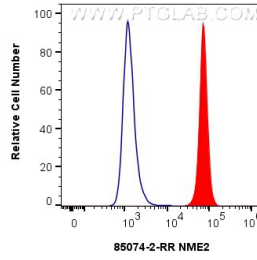
E: proteintech@ptglab.com
W: ptglab.com

This product is exclusively available under Proteintech Group brand and is not available to purchase from any other manufacturer.

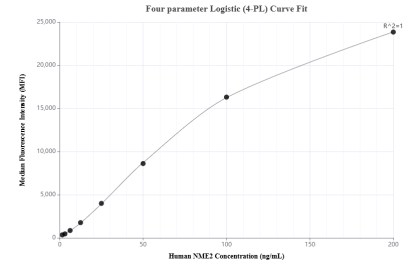
Selected Validation Data



Various lysates were subjected to SDS PAGE followed by western blot with 85074-2-RR (NME2 antibody) at dilution of 1:10000 incubated at room temperature for 1.5 hours. This data was developed using the same antibody clone with 85074-2-PBS in a different storage buffer formulation.



1×10^6 HEK-293T cells were intracellularly stained with 0.25 ug NME2 Recombinant antibody (85074-2-RR, Clone:242698C7) and CoraLite®488-Conjugated Goat Anti-Rabbit IgG(H+L) (SA00013-2)(red), or 0.25 ug Rabbit IgG Isotype Control RecAb (98136-1-RR, Clone: 240953C9) (blue). Cells were fixed with 4% PFA and permeabilized with Flow Cytometry Perm Buffer (PF00011-C). This data was developed using the same antibody clone with 85074-2-PBS in a



Cytometric bead array standard curve of MP01804-1, NME2 Recombinant Matched Antibody Pair, PBS Only. Capture antibody: 85074-3-PBS. Detection antibody: 85074-2-PBS. Standard: Ag13913. Range: 1.563-200 ng/mL.