

For Research Use Only

# Mouse Il1r2 Recombinant antibody, PBS Only (Detector)

Catalog Number: 85071-4-PBS



## Basic Information

<b>Catalog Number:</b> 85071-4-PBS	<b>GenBank Accession Number:</b> NM_010555.4	<b>Purification Method:</b> Protein A purification
<b>Size:</b> 100ug , Concentration: 1 mg/ml by Nanodrop;	<b>GeneID (NCBI):</b> 16178	<b>CloneNo.:</b> 242602B1
<b>Source:</b> Rabbit	<b>UNIPROT ID:</b> P27931	
<b>Isotype:</b> IgG	<b>Full Name:</b> interleukin 1 receptor, type II	
	<b>Calculated MW:</b> 46 kDa	

## Applications

**Tested Applications:**  
Sandwich ELISA, Indirect ELISA, Sample test

**Species Specificity:**  
mouse

## Product Information

85071-4-PBS targets Il1r2 as part of a matched antibody pair:

MP01814-3: 85071-2-PBS capture and 85071-4-PBS detection (validated in Sandwich ELISA)

Unconjugated rabbit recombinant monoclonal antibody in PBS only (BSA and azide free) storage buffer at a concentration of 1 mg/mL, ready for conjugation. Created using Proteintech's proprietary in-house recombinant technology. Recombinant production enables unrivalled batch-to-batch consistency, easy scale-up, and future security of supply.

This conjugation ready format makes antibodies ideal for use in many applications including: ELISAs, multiplex assays requiring matched pairs, mass cytometry, and multiplex imaging applications. Antibody use should be optimized by the end user for each application and assay.

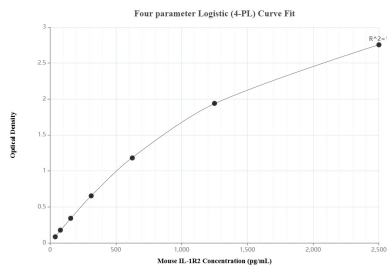
## Storage

**Storage:**  
Store at -80°C.  
**Storage Buffer:**  
PBS Only

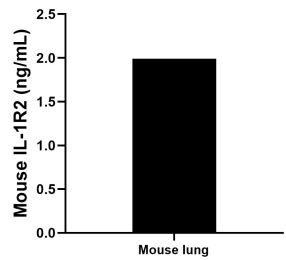
For technical support and original validation data for this product please contact:  
T: 1 (888) 4PTGLAB (1-888-478-4522) (toll free in USA), or 1(312) 455-8498 (outside USA)  
E: [proteintech@ptglab.com](mailto:proteintech@ptglab.com)  
W: [ptglab.com](http://ptglab.com)

This product is exclusively available under Proteintech Group brand and is not available to purchase from any other manufacturer.

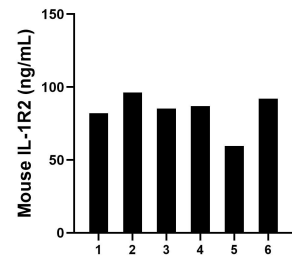
## Selected Validation Data



Sandwich ELISA standard curve of MP01814-3, Mouse IL-1R2 Recombinant Matched Antibody Pair - PBS only. 85071-2-PBS was coated to a plate as the capture antibody and incubated with serial dilutions of standard Eg2956. 85071-4-PBS was HRP conjugated as the detection antibody. Range: 39.1-2500 pg/mL



The mean IL-1R2 concentration was determined to be 2.0 ng/mL in mouse lung cell extract based on a 5.3 mg/mL extract load.



Serum of six mice was measured. The IL-1R2 concentration of detected samples was determined to be 83.6 ng/mL with a range of 59.6-96.2 ng/mL