

For Research Use Only

SIGMAR1 Recombinant antibody

Catalog Number:85064-1-RR



Basic Information

Catalog Number: 85064-1-RR	GenBank Accession Number: BC004899	Purification Method: Protein A purification
Size: 100ul , Concentration: 1000 ug/ml by Nanodrop;	GeneID (NCBI): 10280	CloneNo.: 242621C6
Source: Rabbit	UNIPROT ID: Q99720	Recommended Dilutions: WB 1:5000-1:50000
Isotype: IgG	Full Name: sigma non-opioid intracellular receptor 1	
Immunogen Catalog Number: AG7351	Calculated MW: 25 kDa	
	Observed MW: 25 kDa	

Applications

Tested Applications: WB, ELISA	Positive Controls: WB : HEK-293T cells, COLO 320 cells, C2C12 cells, C6 cells, mouse colon tissue, rat colon tissue
Species Specificity: human, mouse, rat	

Background Information

SIGMAR1, also named as OPRS1, SRBP, SIG-1R and AAG8, belongs to the ERG2 family. It is an endoplasmic reticulum chaperone that binds a wide variety of ligands, including neurosteroids, psychostimulants, and dextrobenzomorphans. SIGMAR1 is ubiquitously expressed, and is enriched in motor neurons of the brain and spinal cord. It plays a role in calcium signaling through modulation together with ANK2 of the ITP3R-dependent calcium efflux at the endoplasmic reticulum. SIGMAR1 plays a role in several other cell functions including proliferation, survival and death. SDS-PAGE and Western blot analysis showed that SIGMAR1 has an apparent molecular mass of 25 kDa. SIGMAR1 has 5 isoforms with MW 21-27kDa and 12kDa.

Storage

Storage:
Store at -20°C. Stable for one year after shipment.
Storage Buffer:
PBS with 0.02% sodium azide and 50% glycerol pH 7.3.
Aliquoting is unnecessary for -20°C storage

*** 20ul sizes contain 0.1% BSA

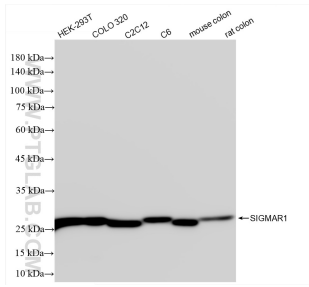
For technical support and original validation data for this product please contact:

T: 1 (888) 4PTGLAB (1-888-478-4522) (toll free in USA), or 1(312) 455-8498 (outside USA)

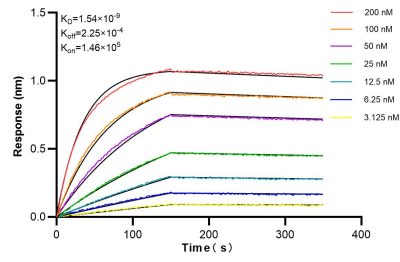
E: proteintech@ptglab.com
W: ptglab.com

This product is exclusively available under Proteintech Group brand and is not available to purchase from any other manufacturer.

Selected Validation Data



Various lysates were subjected to SDS PAGE followed by western blot with 85064-1-RR (SIGMAR1 antibody) at dilution of 1:10000 incubated at room temperature for 1.5 hours.



Biolayer interferometry (BLI) kinetic assays of 85064-1-RR against Human SIGMAR1 were performed. The affinity constant is 1.54 nM.