

For Research Use Only

PTPN22 Recombinant antibody, PBS Only (Capture)

Catalog Number: 85062-2-PBS



Basic Information

Catalog Number: 85062-2-PBS	GenBank Accession Number: BC017785	Purification Method: Protein A purification
Size: 100ug , Concentration: 1 mg/ml by Nanodrop;	GeneID (NCBI): 26191	CloneNo.: 242688G1
Source: Rabbit	UNIPROT ID: Q9Y2R2	
Isotype: IgG	Full Name: protein tyrosine phosphatase, non-receptor type 22 (lymphoid)	
Immunogen Catalog Number: AG2397	Calculated MW: 82 kDa, 92 kDa	
	Observed MW: 100-110 kDa	

Applications

Tested Applications:
WB, Cytometric bead array, Indirect ELISA

Species Specificity:
human

Product Information

85062-2-PBS targets PTPN22 as part of a matched antibody pair:

MP01818-1: 85062-2-PBS capture and 85062-3-PBS detection (validated in Cytometric bead array)

MP01818-2: 85062-2-PBS capture and 85062-1-PBS detection (validated in Cytometric bead array)

Unconjugated rabbit recombinant monoclonal antibody in PBS only (BSA and azide free) storage buffer at a concentration of 1 mg/mL, ready for conjugation. Created using Proteintech's proprietary in-house recombinant technology. Recombinant production enables unrivalled batch-to-batch consistency, easy scale-up, and future security of supply.

This conjugation ready format makes antibodies ideal for use in many applications including: ELISAs, multiplex assays requiring matched pairs, mass cytometry, and multiplex imaging applications. Antibody use should be optimized by the end user for each application and assay.

Background Information

PTPN22 (Tyrosine-protein phosphatase non-receptor type 22) is also named as LyP, PEP, PTPN8. It belongs to the protein-tyrosine phosphatase family and non-receptor class 4 subfamily. It acts as negative regulator of T-cell receptor (TCR) signaling. Defects in PTPN22 are a cause of susceptibility to systemic lupus erythematosus (SLE). It has some isoforms produced by alternative splicing with calculated molecular mass of 79-92 kDa, and apparent molecular mass of 100-110 kDa.

Storage

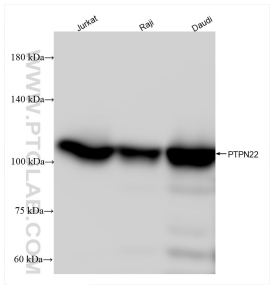
Storage:
Store at -80°C.

Storage Buffer:
PBS Only

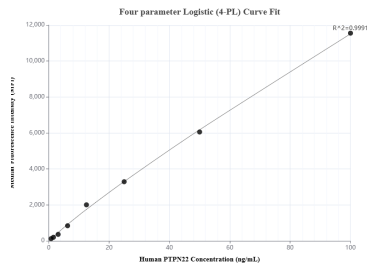
For technical support and original validation data for this product please contact:
T: 1 (888) 4PTGLAB (1-888-478-4522) (toll free in USA), or 1(312) 455-8498 (outside USA)
E: proteintech@ptglab.com
W: ptglab.com

This product is exclusively available under Proteintech Group brand and is not available to purchase from any other manufacturer.

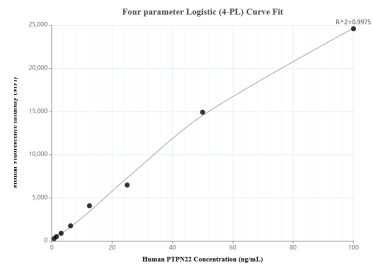
Selected Validation Data



Various lysates were subjected to SDS PAGE followed by western blot with 85062-2-RR (PTPN22 antibody) at dilution of 1:10000 incubated at room temperature for 1.5 hours. This data was developed using the same antibody clone with 85062-2-PBS in a different storage buffer formulation.



Cytometric bead array standard curve of MP01818-2, PTPN22 Recombinant Matched Antibody Pair, PBS Only. Capture antibody: 85062-2-PBS. Detection antibody: 85062-1-PBS. Standard: Ag2397. Range: 0.781-100 ng/mL



Cytometric bead array standard curve of MP01818-1, PTPN22 Recombinant Matched Antibody Pair, PBS Only. Capture antibody: 85062-2-PBS. Detection antibody: 85062-3-PBS. Standard: Ag2397. Range: 0.781-100 ng/mL